

A

A

B

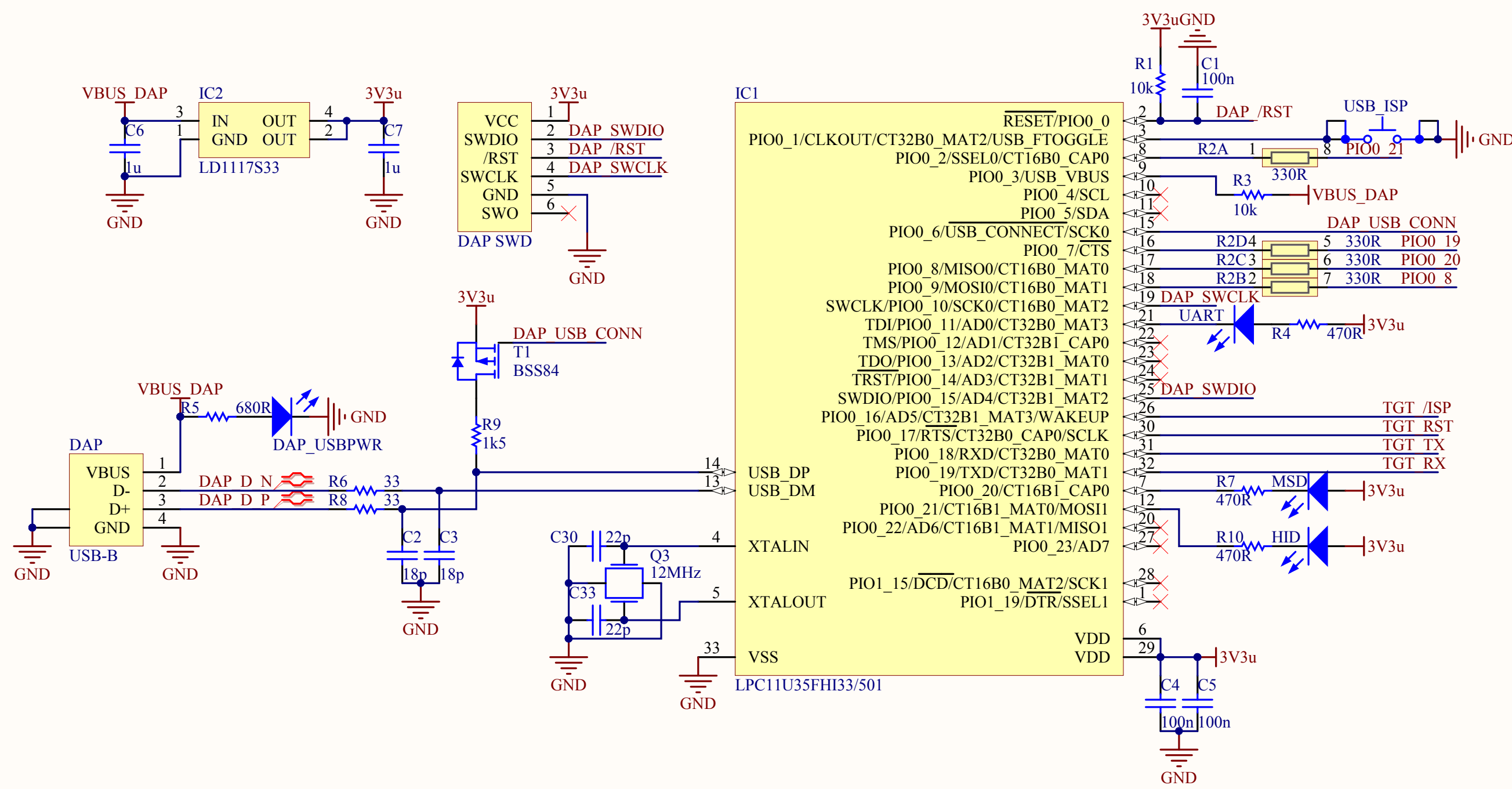
B

C

C

D

D



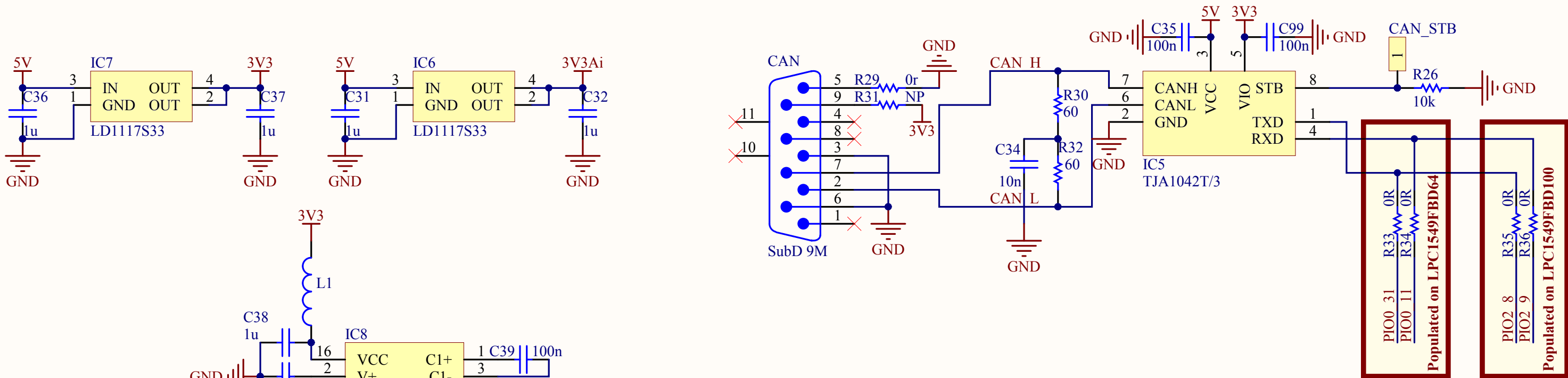
MCB1500

| | |
|------------------|-------------------|
| CMSIS-DAP.SchDoc | Revision: 1.1 |
| Size: A4 | Sheet 1 of 6 |
| Date: 18.2.2014 | Web: www.keil.com |



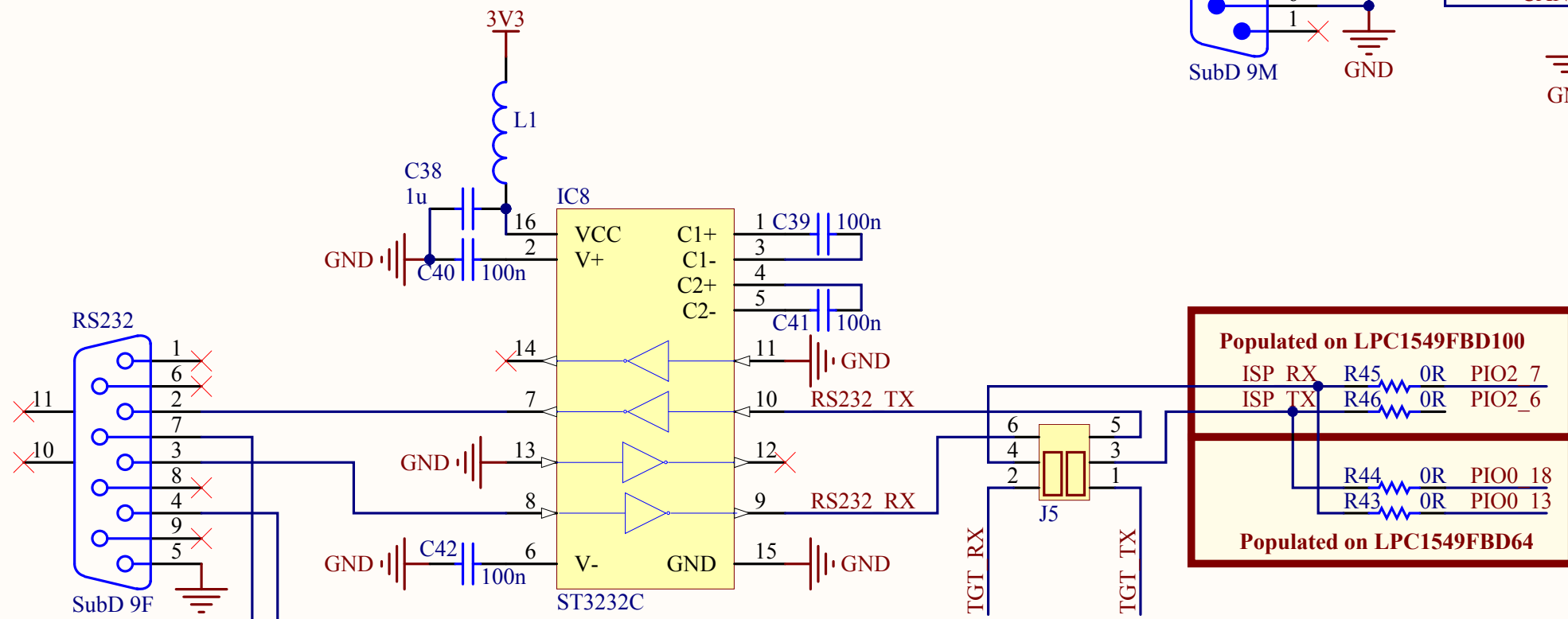
A

A



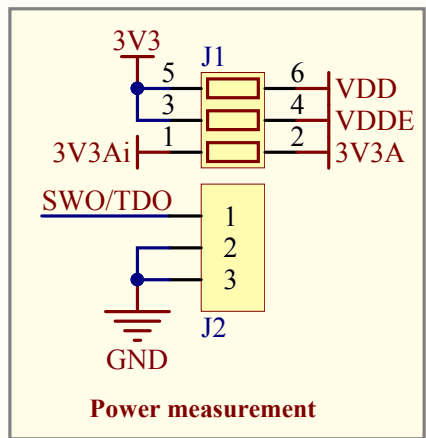
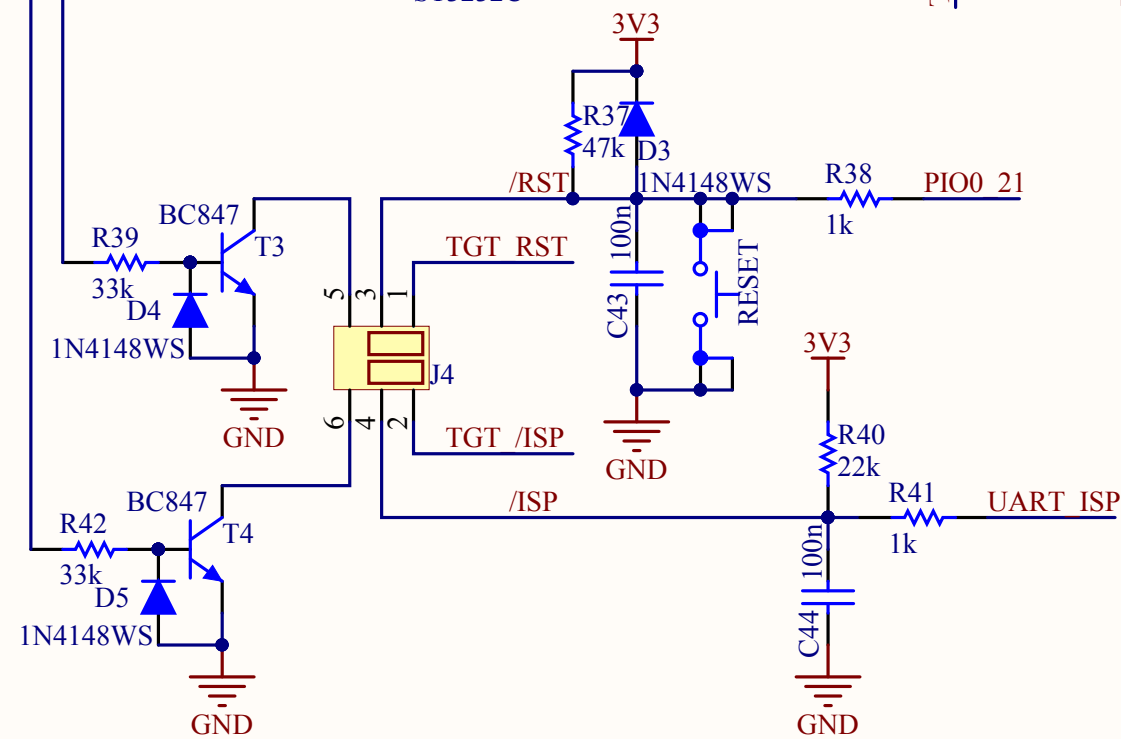
B

B



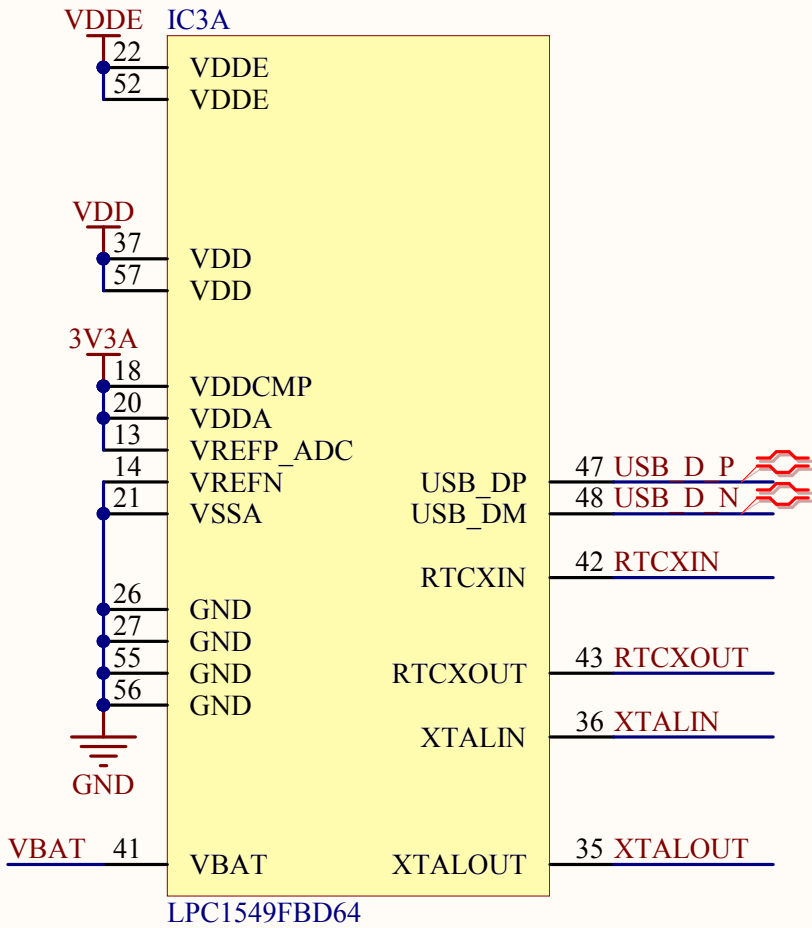
C

C



D

D



IC3B

| | | | | | |
|---------|----|-----------------------------|---------------------------|----|---------|
| PIO0_0 | 2 | PIO0_0/ADC0_10/SCT0_OUT3 | PIO1_0/ADC0_8 | 4 | PIO1_0 |
| PIO0_1 | 5 | PIO0_1/ADC0_7/SCT0_OUT4 | PIO1_1/ADC1_0 | 15 | PIO1_1 |
| PIO0_2 | 6 | PIO0_2/ADC0_6/SCT1_OUT3 | PIO1_2/ADC1_4 | 25 | PIO1_2 |
| PIO0_3 | 7 | PIO0_3/ADC0_5/SCT1_OUT4 | PIO1_3/ADC1_5 | 28 | PIO1_3 |
| PIO0_4 | 8 | PIO0_4/ADC0_4 | PIO1_4/ADC1_10 | 33 | PIO1_4 |
| PIO0_5 | 9 | PIO0_5/ADC0_3 | PIO1_5/ADC1_11 | 34 | PIO1_5 |
| PIO0_6 | 10 | PIO0_6/ADC0_2/SCT2_OUT3 | PIO1_6/ACMP_I2 | 46 | PIO1_6 |
| PIO0_7 | 11 | PIO0_7/ADC0_1 | PIO1_7/ACMP3_14 | 51 | PIO1_7 |
| PIO0_8 | 12 | PIO0_8/ADC0_0/TDO | PIO1_8/ACMP3_I3/SCT3_OUT4 | 53 | PIO1_8 |
| PIO0_9 | 16 | PIO0_9/ADC1_1/TDI | PIO1_9/ACMP2_14 | 54 | PIO1_9 |
| PIO0_10 | 19 | PIO0_10/ADC1_2 | PIO1_10/ACMP1_14 | 59 | PIO1_10 |
| PIO0_11 | 23 | PIO0_11/ADC1_3 | PIO1_11 | 38 | PIO1_11 |
| PIO0_12 | 24 | PIO0_12/DAC_OUT | | | |
| PIO0_13 | 29 | PIO0_13/ADC1_6 | | | |
| PIO0_14 | 30 | PIO0_14/ADC1_7/SCT1_OUT5 | | | |
| PIO0_15 | 31 | PIO0_15/ADC1_8 | | | |
| PIO0_16 | 32 | PIO0_16/ADC1_9 | | | |
| PIO0_17 | 39 | PIO0_17/WAKEUP/TRS_TN | | | |
| PIO0_18 | 17 | PIO0_18/SCT0_OUT5 | | | |
| PIO0_19 | 40 | SWCLK/PIO0_19/TCK | | | |
| PIO0_20 | 44 | SWDIO/PIO0_20/SCT1_OUT6/TMS | | | |
| PIO0_21 | 45 | RESETn/PIO0_21 | | | |
| PIO0_22 | 49 | PIO0_22/I2C0_SCL | | | |
| PIO0_23 | 50 | PIO0_23/I2C0_SDA | | | |
| PIO0_24 | 58 | PIO0_24/SCT0_OUT6 | | | |
| PIO0_25 | 60 | PIO0_25/ACMP0_14 | | | |
| PIO0_26 | 61 | PIO0_26/ACMP0_I3/SCT3_OUT3 | | | |
| PIO0_27 | 62 | PIO0_27/ACMP_I1 | | | |
| PIO0_28 | 63 | PIO0_28/ACMP1_13 | | | |
| PIO0_29 | 64 | PIO0_29/ACMP2_I3/SCT2_OUT4 | | | |
| PIO0_30 | 1 | PIO0_30/ADC0_11 | | | |
| PIO0_31 | 3 | PIO0_31/ADC0_9 | | | |

LPC1549FBD64

MCB1500

LPC1500FBD64.SchDoc
Size: A4
Date: 18.2.2014

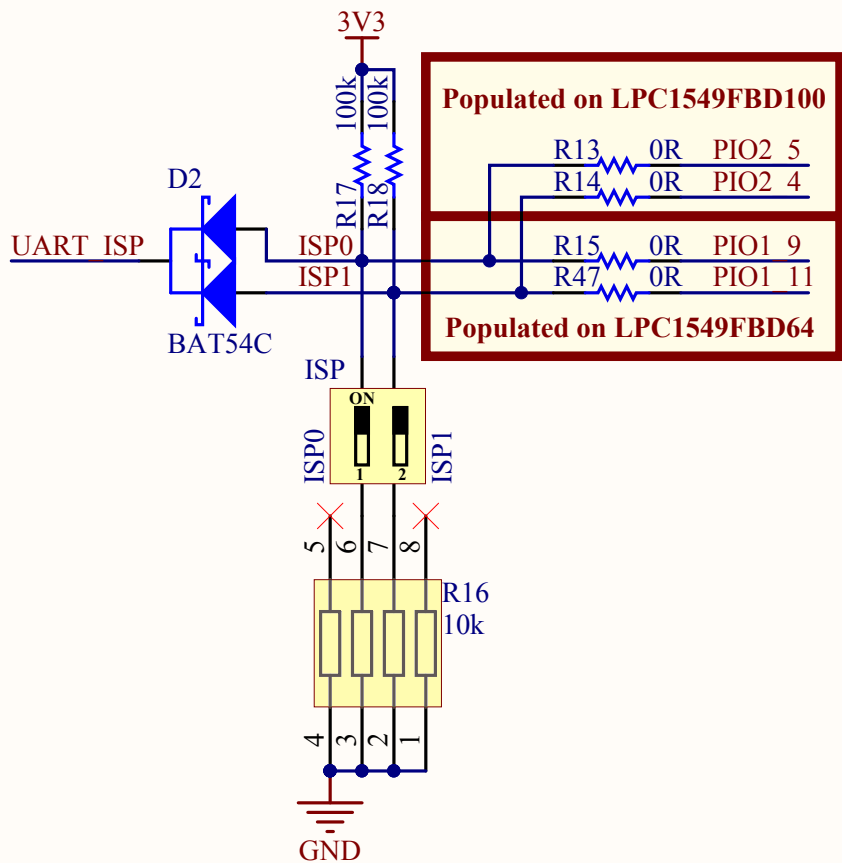
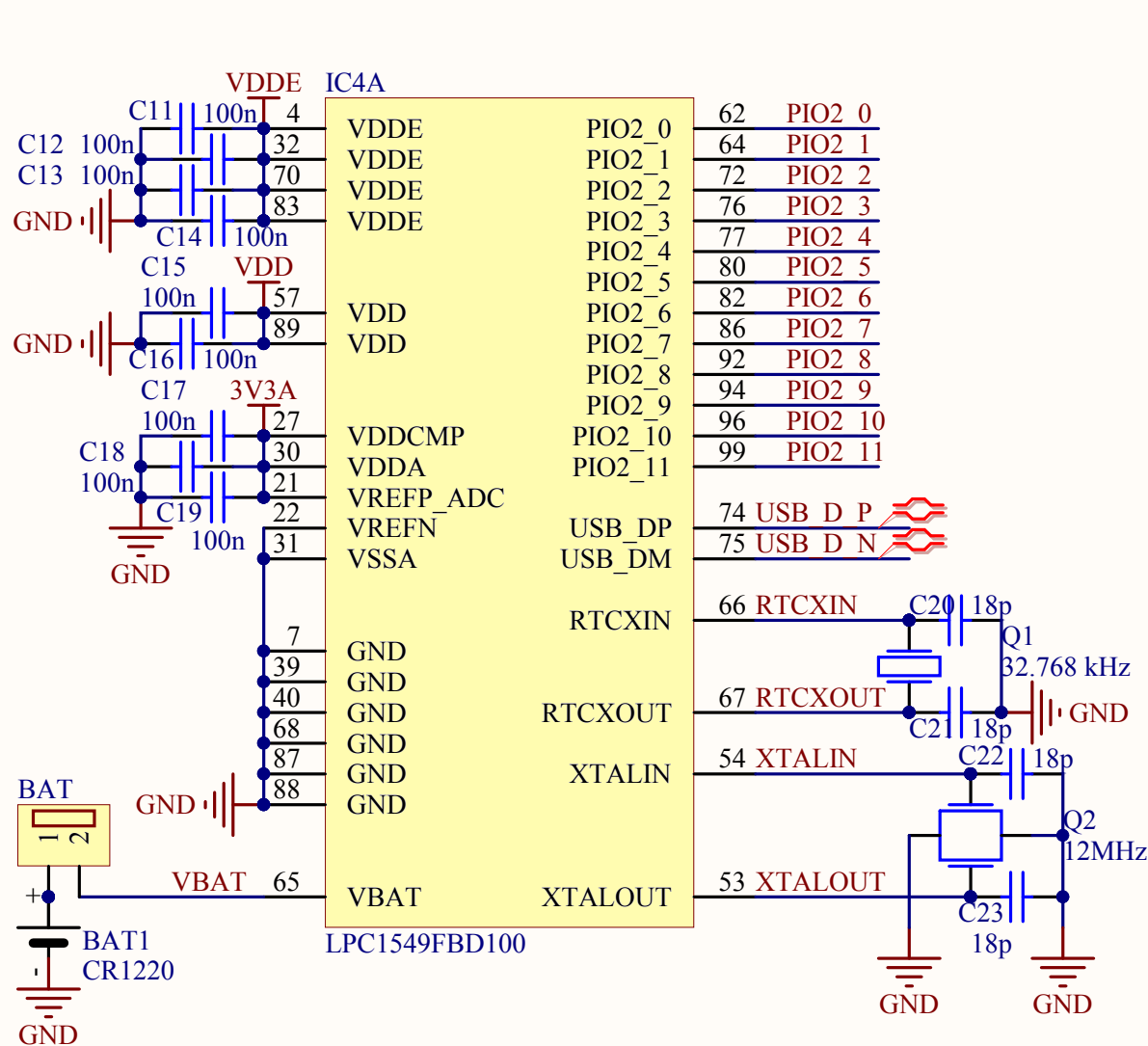
Revision: 1.1

Sheet 3 of 6

Web: www.keil.com



A



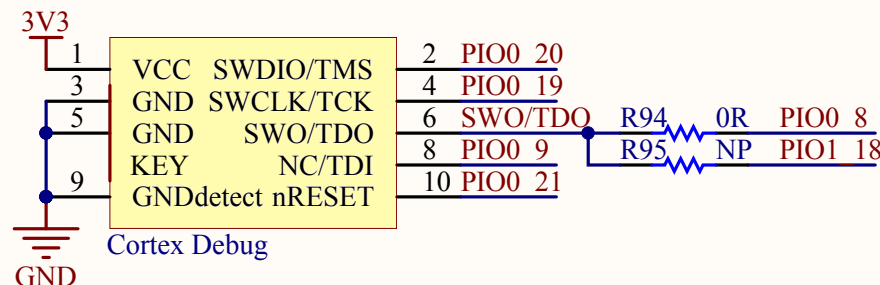
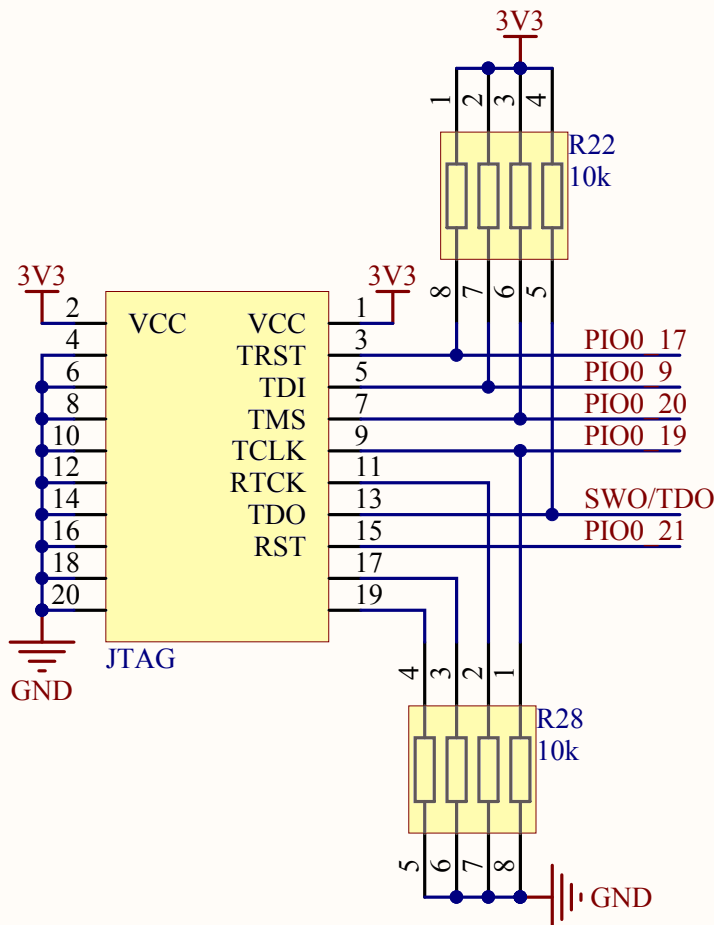
| Boot mode | ISP0 | ISP1 | Description |
|-----------|------|------|---|
| No ISP | HIGH | HIGH | ISP bypassed. Part attempts to boot from FLASH. |
| C_CAN | HIGH | LOW | Part boots from C_CAN |
| USB | LOW | HIGH | Part boots from USB |
| UART0 | LOW | LOW | Part boots from UART0 |

IC4B

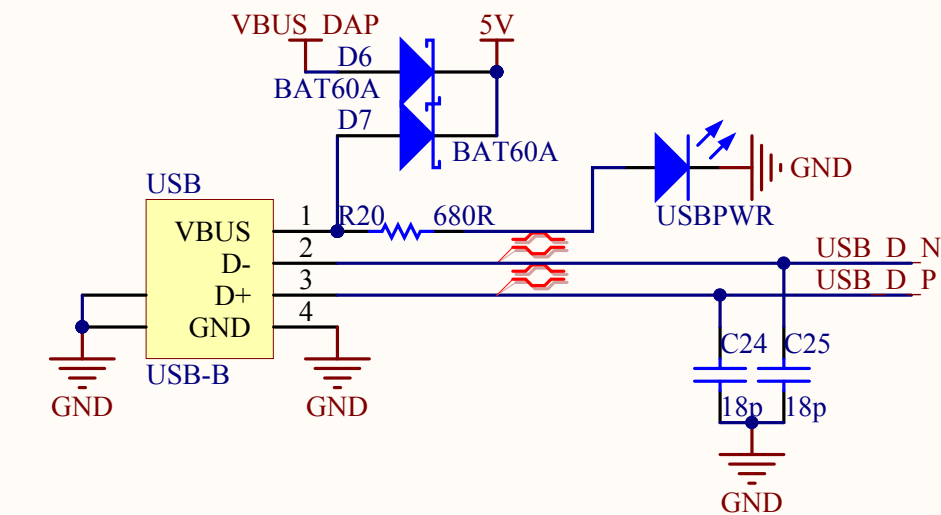
| | | | | | |
|---------|-----|-----------------------------|----------------------------|----|---------|
| PIO0_0 | 2 | PIO0_0/ADC0_10/SCT0_OUT3 | PIO1_0/ADC0_8 | 5 | PIO1_0 |
| PIO0_1 | 6 | PIO0_1/ADC0_7/SCT0_OUT4 | PIO1_1/ADC1_0 | 23 | PIO1_1 |
| PIO0_2 | 8 | PIO0_2/ADC0_6/SCT1_OUT3 | PIO1_2/ADC1_4 | 36 | PIO1_2 |
| PIO0_3 | 10 | PIO0_3/ADC0_5/SCT1_OUT4 | PIO1_3/ADC1_5 | 41 | PIO1_3 |
| PIO0_4 | 13 | PIO0_4/ADC0_4 | PIO1_4/ADC1_10 | 51 | PIO1_4 |
| PIO0_5 | 14 | PIO0_5/ADC0_3 | PIO1_5/ADC1_11 | 52 | PIO1_5 |
| PIO0_6 | 16 | PIO0_6/ADC0_2/SCT2_OUT3 | PIO1_6/ACMP_I2 | 73 | PIO1_6 |
| PIO0_7 | 17 | PIO0_7/ADC0_1 | PIO1_7/ACMP3_I4 | 81 | PIO1_7 |
| PIO0_8 | 19 | PIO0_8/ADC0_0/TDO | PIO1_8/ACMP3_I3/SCT_3_OUT4 | 84 | PIO1_8 |
| PIO0_9 | 24 | PIO0_9/ADC1_1/TDI | PIO1_9/ACMP2_I4 | 85 | PIO1_9 |
| PIO0_10 | 28 | PIO0_10/ADC1_2 | PIO1_10/ACMP1_I4 | 91 | PIO1_10 |
| PIO0_11 | 33 | PIO0_11/ADC1_3 | PIO1_11 | 58 | PIO1_11 |
| PIO0_12 | 35 | PIO0_12/DAC_OUT | PIO1_12 | 9 | PIO1_12 |
| PIO0_13 | 43 | PIO0_13/ADC1_6 | PIO1_13 | 11 | PIO1_13 |
| PIO0_14 | 45 | PIO0_14/ADC1_7/SCT1_OUT5 | PIO1_14/SCT0_OUT7 | 12 | PIO1_14 |
| PIO0_15 | 47 | PIO0_15/ADC1_8 | PIO1_15 | 15 | PIO1_15 |
| PIO0_16 | 49 | PIO0_16/ADC1_9 | PIO1_16 | 18 | PIO1_16 |
| PIO0_17 | 61 | PIO0_17/WAKEUP/TRS_TN | PIO1_17/SCT1_OUT7 | 20 | PIO1_17 |
| PIO0_18 | 26 | PIO0_18/SCT0_OUT5 | PIO1_18 | 25 | PIO1_18 |
| PIO0_19 | 63 | SWCLK/PIO0_19/TCK | PIO1_19 | 29 | PIO1_19 |
| PIO0_20 | 69 | SWDIO/PIO0_20/SCT1_OUT6/TMS | PIO1_20/SCT2_OUT5 | 34 | PIO1_20 |
| PIO0_21 | 71 | RESETn/PIO0_21 | PIO1_21 | 37 | PIO1_21 |
| PIO0_22 | 78 | PIO0_22/I2C0_SCL | PIO1_22 | 38 | PIO1_22 |
| PIO0_23 | 79 | PIO0_23/I2C0_SDA | PIO1_23 | 42 | PIO1_23 |
| PIO0_24 | 90 | PIO0_24/SCT0_OUT6 | PIO1_24/SCT3_OUT5 | 44 | PIO1_24 |
| PIO0_25 | 93 | PIO0_25/ACMP0_I4 | PIO1_25 | 46 | PIO1_25 |
| PIO0_26 | 95 | PIO0_26/ACMP0_I3/SC_T3_OUT3 | PIO1_26 | 48 | PIO1_26 |
| PIO0_27 | 97 | PIO0_27/ACMP_I1 | PIO1_27 | 50 | PIO1_27 |
| PIO0_28 | 98 | PIO0_28/ACMP_I3 | PIO1_28 | 55 | PIO1_28 |
| PIO0_29 | 100 | PIO0_29/ACMP2_I3/SC_T2_OUT4 | PIO1_29 | 56 | PIO1_29 |
| PIO0_30 | 1 | PIO0_30/ADC0_I1 | PIO1_30 | 59 | PIO1_30 |
| PIO0_31 | 3 | PIO0_31/ADC0_9 | PIO1_31 | 60 | PIO1_31 |

LPC1549FBD100

C



D



MCB1500

LPC1500FBD100.SchDoc

Size: A4

Date: 18.2.2014

Revision: 1.1

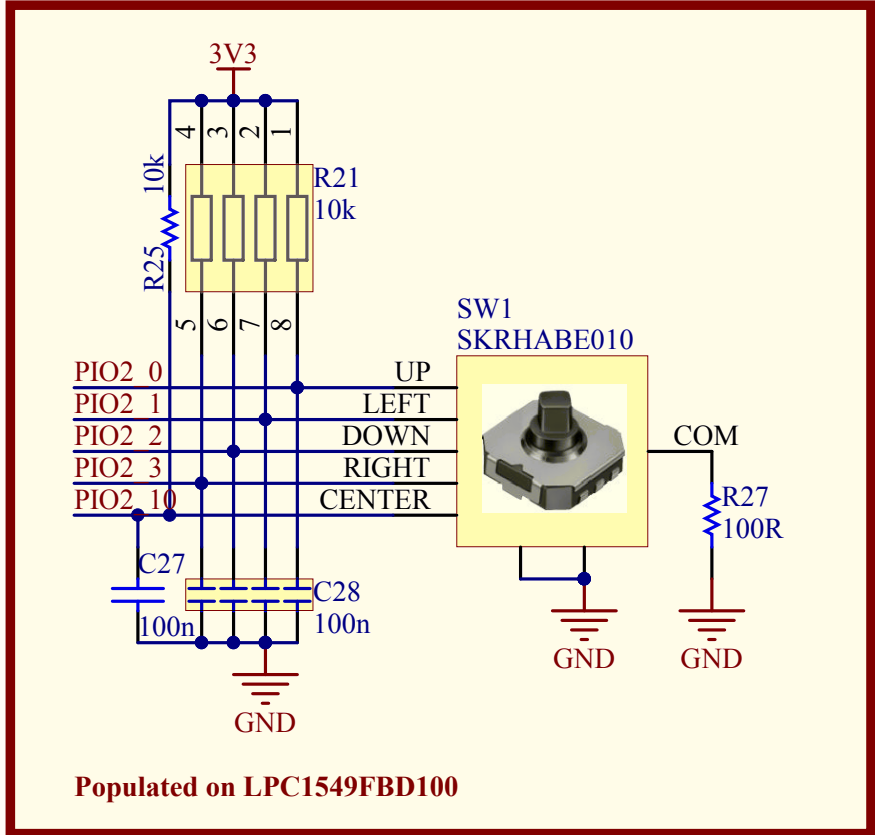
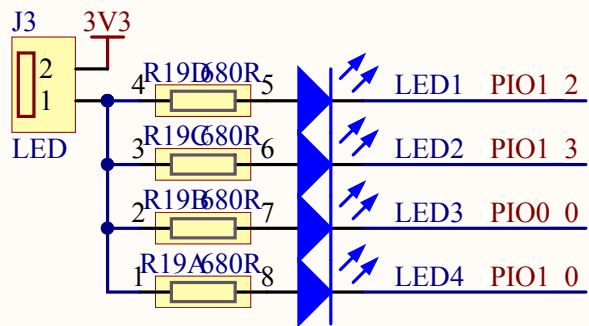
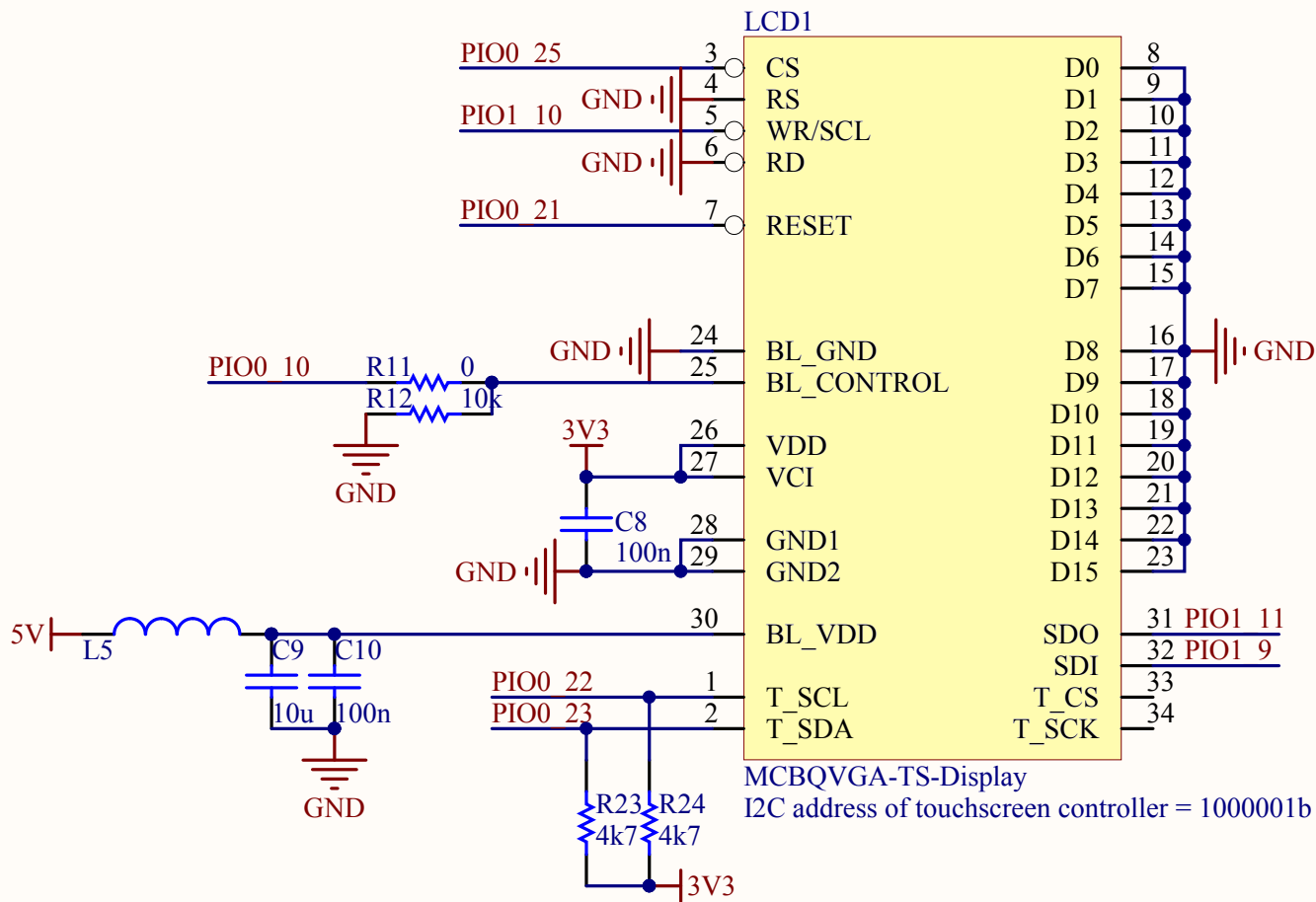
Sheet 4 of 6

Web: www.keil.com



A

A

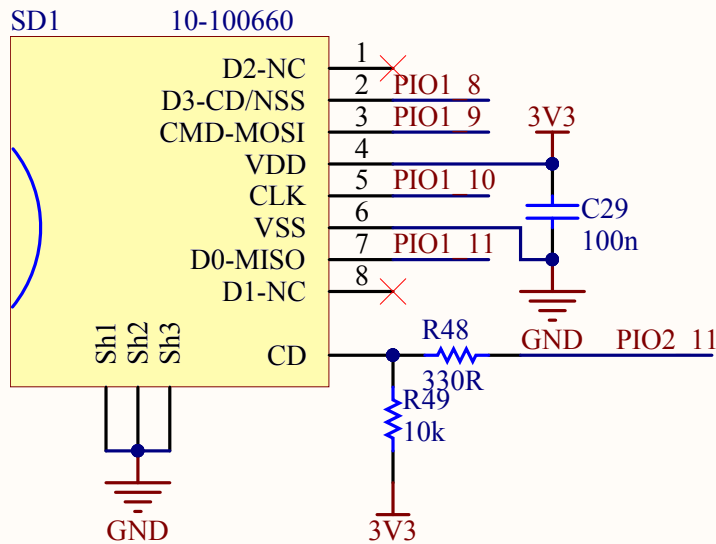
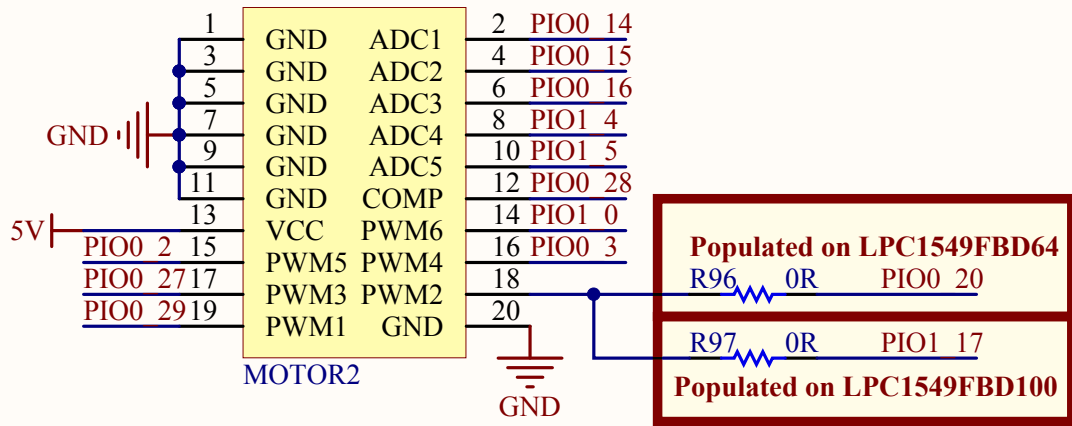
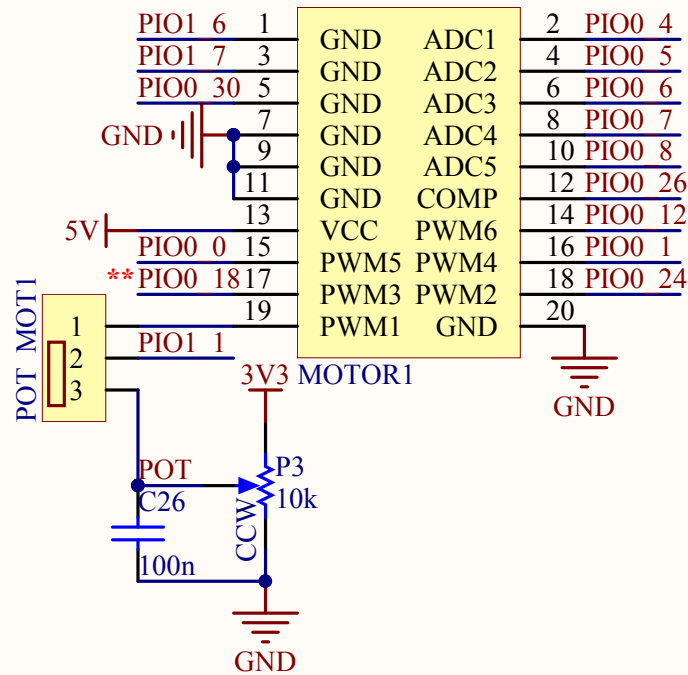


B

B

C

C



D

D

A

B

C

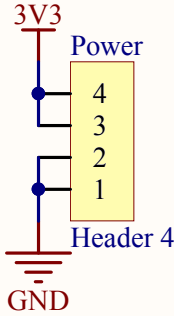
D

A

B

C

D



| | |
|---------|----|
| PIO0 0 | 32 |
| PIO0 1 | 31 |
| PIO0 2 | 30 |
| PIO0 3 | 29 |
| PIO0 4 | 28 |
| PIO0 5 | 27 |
| PIO0 6 | 26 |
| PIO0 7 | 25 |
| PIO0 8 | 24 |
| PIO0 9 | 23 |
| PIO0 10 | 22 |
| PIO0 11 | 21 |
| PIO0 12 | 20 |
| PIO0 13 | 19 |
| PIO0 14 | 18 |
| PIO0 15 | 17 |
| PIO0 16 | 16 |
| PIO0 17 | 15 |
| PIO0 18 | 14 |
| PIO0 19 | 13 |
| PIO0 20 | 12 |
| PIO0 21 | 11 |
| PIO0 22 | 10 |
| PIO0 23 | 9 |
| PIO0 24 | 8 |
| PIO0 25 | 7 |
| PIO0 26 | 6 |
| PIO0 27 | 5 |
| PIO0 28 | 4 |
| PIO0 29 | 3 |
| PIO0 30 | 2 |
| PIO0 31 | 1 |

Port0

| | |
|---------|----|
| PIO1 0 | 1 |
| PIO1 1 | 2 |
| PIO1 2 | 3 |
| PIO1 3 | 4 |
| PIO1 4 | 5 |
| PIO1 5 | 6 |
| PIO1 6 | 7 |
| PIO1 7 | 8 |
| PIO1 8 | 9 |
| PIO1 9 | 10 |
| PIO1 10 | 11 |
| PIO1 11 | 12 |
| PIO1 12 | 13 |
| PIO1 13 | 14 |
| PIO1 14 | 15 |
| PIO1 15 | 16 |
| PIO1 16 | 17 |
| PIO1 17 | 18 |
| PIO1 18 | 19 |
| PIO1 19 | 20 |
| PIO1 20 | 21 |
| PIO1 21 | 22 |
| PIO1 22 | 23 |
| PIO1 23 | 24 |
| PIO1 24 | 25 |
| PIO1 25 | 26 |
| PIO1 26 | 27 |
| PIO1 27 | 28 |
| PIO1 28 | 29 |
| PIO1 29 | 30 |
| PIO1 30 | 31 |
| PIO1 31 | 32 |

Port1

| | |
|---------|----|
| PIO2 0 | 1 |
| PIO2 1 | 2 |
| PIO2 2 | 3 |
| PIO2 3 | 4 |
| PIO2 4 | 5 |
| PIO2 5 | 6 |
| PIO2 6 | 7 |
| PIO2 7 | 8 |
| PIO2 8 | 9 |
| PIO2 9 | 10 |
| PIO2 10 | 11 |
| PIO2 11 | 12 |

Port2