

Install Keil MDK Version 5

- Download and install the MDK Core from www.keil.com/mdk5/install

Add Software Pack using the Pack Installer

- **Keil::LPC4300_DFP** – NXP LPC4300 Series Device Support

Power up the board

- Connect a USB power supply to a **Power Micro USB** connector
- Connect the board to a debug adapter, for example ULINK pro , using the **10-pin Debug Connector**

Verify Installation

- Copy an example project using the Pack Installer. Compile, download to Flash, and debug the application. The provided examples are ready to run. Trace settings might have to be adapted.
- Or download examples that apply to this board from www.keil.com/dd2/nxp/lpc4330

More Information

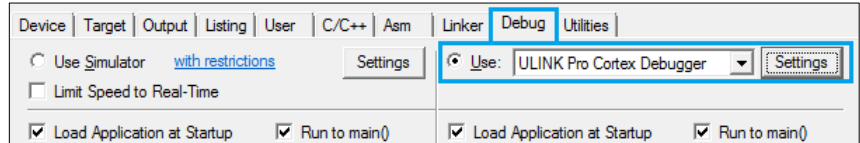
- Evaluation Board Description www.keil.com/boards2/ngx/lpc4330_xplorer

Related Information

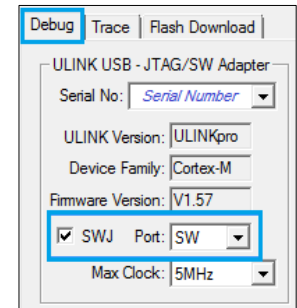
- MDK Version 5 www.keil.com/mdk5
- Getting Started User's Guide www.keil.com/gsg
- MDK-Professional Middleware www.keil.com/middleware
- Learning Platform www.keil.com/learn

ULINKpro Debugger and Trace Adapter

In µVision, open the dialog
Options for Target – Debug,
enable **Use** and select
ULINK Pro Cortex Debugger.



Click **Settings** and configure the
Debug connection for Serial Wire Debug (SWD)
by selecting the **Port SW**. Enable **SWJ**.

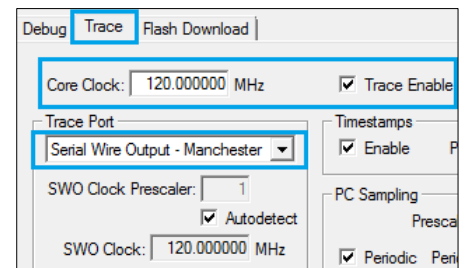


SWO Trace Settings

Click the **Trace** tab and enter the correct
CPU **Core Clock** speed as specified in your project.

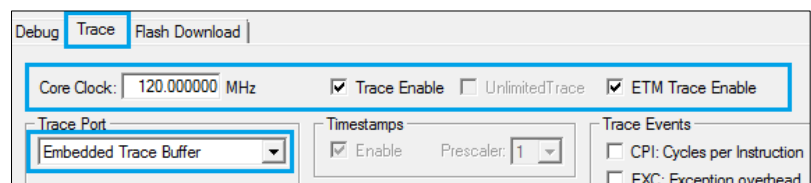
Check the **Trace Enable** box.

For SWO trace, set **Trace Port** to *Serial Wire Output – Manchester*.



ETM Trace Settings

Set **Trace Port** to *Embedded Trace Buffer*
and check **ETM Trace Enable**.



Further configuration instructions for trace can be found on www.keil.com/mdk5/ulink/ulinkpro.

In **Quick Links**, select **ULINKpro User's Guide**; then **Configure Cortex-M Devices for Tracing** and select chapter **NXP LPC43xx Devices**.