

Install Keil MDK Version 5 – www.keil.com/mdk5/install

Download and install MDK Core and add these Software Packs:

- **Keil::SAM-V_DFP** – Atmel SAM V7x Series Device Support
- **Keil::SAM-ESV7_SFP** – Atmel SAM E/S/V7x Software Foundation (HAL, Driver, BSP)

Verify the installation using example projects provided in the Software Packs:

- Connect the board's **Debug & Power** port to your computer using a Micro USB cable
- Windows will recognize the USB device and install the required drivers automatically.


More Information

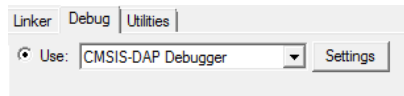
- Getting Started User's Guide www.keil.com/gsg
- ARM Cortex-M7 Support www.keil.com/mdk5/cortex-m7

Related Products

- MDK Version 5: www.keil.com/mdk5
- MDK-Professional Middleware: www.keil.com/mdk5/middleware
- ULINK Family of Debug Adapters: www.keil.com/mdk5/ulink

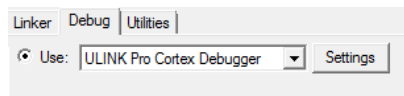
Run/Stop Debugging

The Xplained Ultra carries an on-board CMSIS-DAP debug adapter. This is suitable for run/stop debugging. To enable it, select **Options for Target**  or press **ALT+F7**. Go to the **Debug** tab and select the **CMSIS-DAP Debugger**. You can start to download your application code into the Flash and debug it.

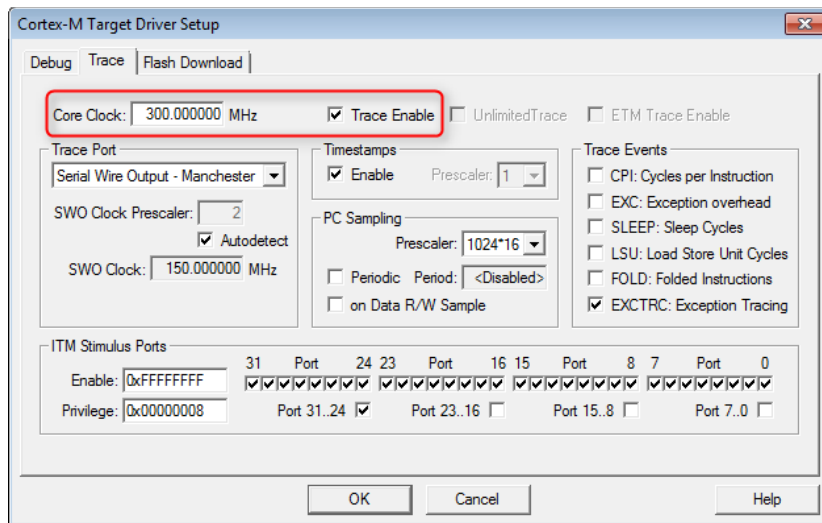


Trace

The board also carries a 20-pin CoreSight™ Trace connector. For full trace capability, connect for example a ULINKpro debug adapter to it. Go to **Options for Target**, select the **Debug** tab and choose **ULINK Pro Cortex Debugger**.



Click on **Settings** next to it and go to the **Trace** tab. For ITM trace with the Serial Wire Viewer, set the correct **Core Clock** and check the **Trace Enable** box.



More Information

- Getting Started User's Guide www.keil.com/gsg