

Install Keil MDK Version 5 – www.keil.com/mdk5/install

Download and install MDK Core and add these Software Packs:

- **Keil::STM32F7xx_DFP** – STMicroelectronics STM32F7 Series Device Support

Verify the installation using example projects provided in the Software Packs:

- Connect a 5V/2A power supply to the **Power** receptacle.
- Do **not** connect the board to the PC! Go to C:\Keil_v5\ARM\STLink\USBDriver and double-click **stlink_winusb_install.bat**. The USB drivers for the on-board ST-Link/V2 will install.
- Connect the board's **Debug & Power** port to your computer using a Mini USB cable. Windows will now recognize the ST-Link/V2 device and install the drivers automatically.

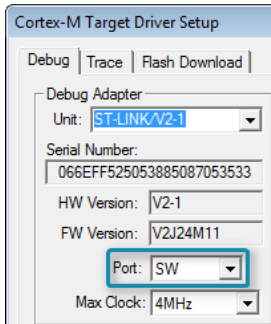
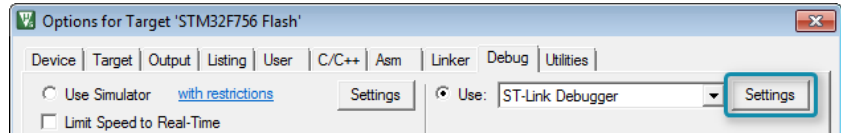
More Information

- Getting Started User's Guide www.keil.com/gsg
- ARM Cortex-M7 Support www.keil.com/mdk5/cortex-m7

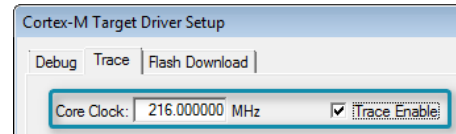
Related Products

- MDK Version 5: www.keil.com/mdk5
- MDK-Professional Middleware: www.keil.com/mdk5/middleware

ST-Link Debugger

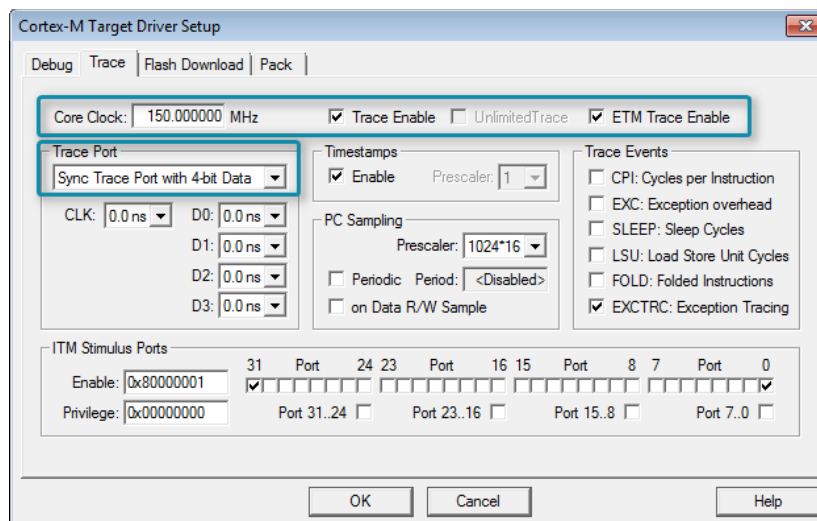


- Connect using Serial Wire Debug (SWD) by selecting the Port **SW**.
- Configure ITM Trace by selecting the **Trace** tab and enter the correct CPU **Core Clock** speed as specified in your project. Check the **Trace Enable** box.



Trace with ULINKpro

For full trace capability, connect a ULINKpro to the board's **Trace** connector and choose **ULINK Pro Cortex Debugger**. Configure ETM trace for instruction tracing:



Note: You need to lower the core clock as trace is not supported for clock frequencies above 180 MHz on this microcontroller device.

More Information

- Getting Started User's Guide www.keil.com/gsg