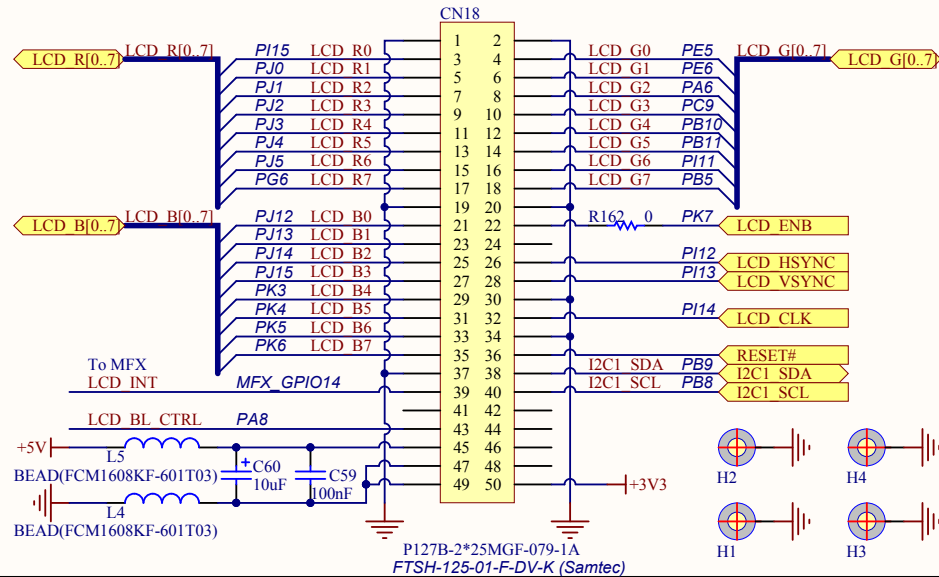
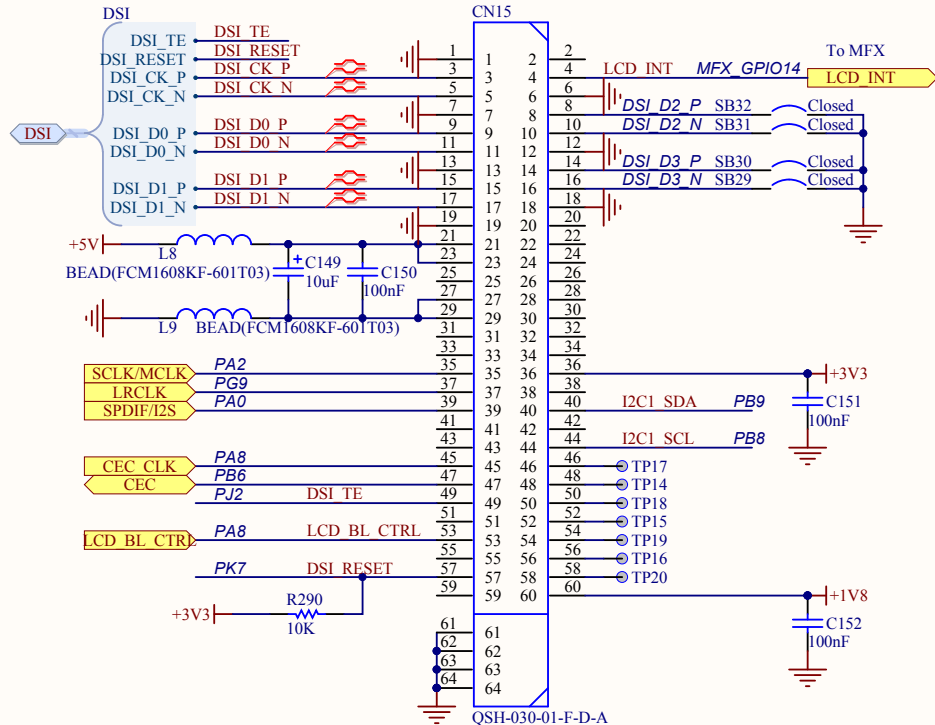


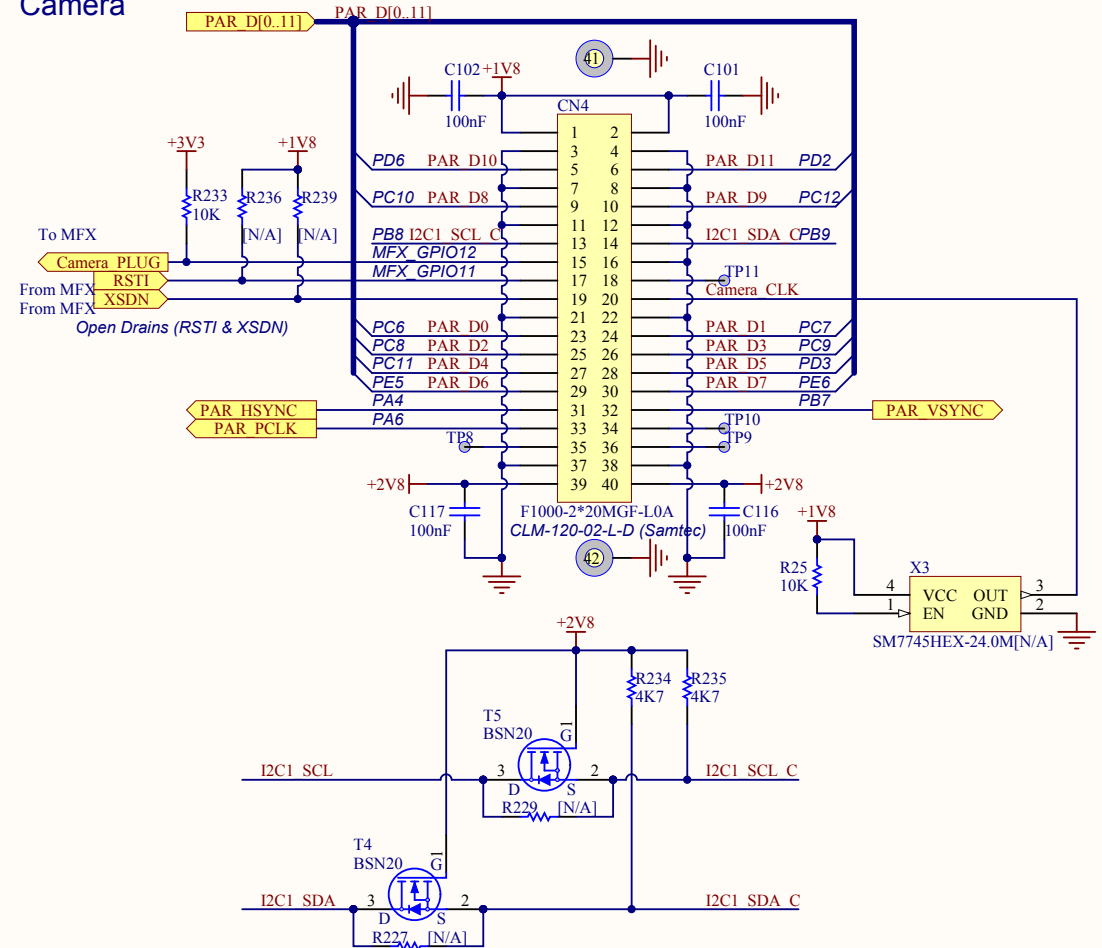
RGB LCD



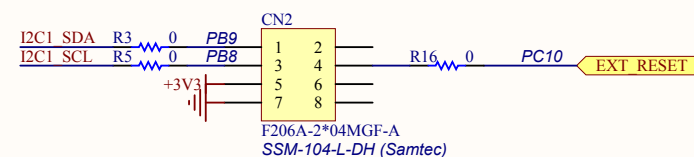
DSI LCD




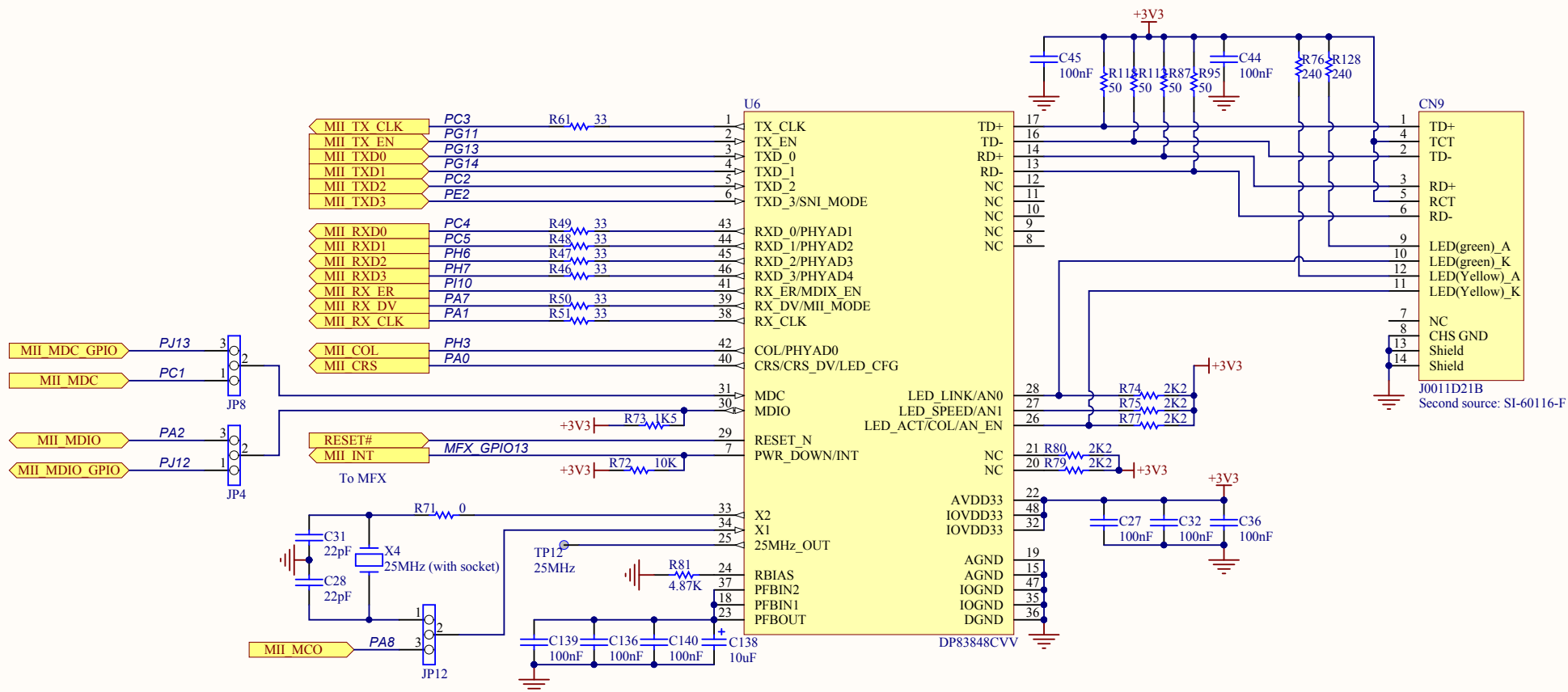
Camera



I2C_EXT Connector

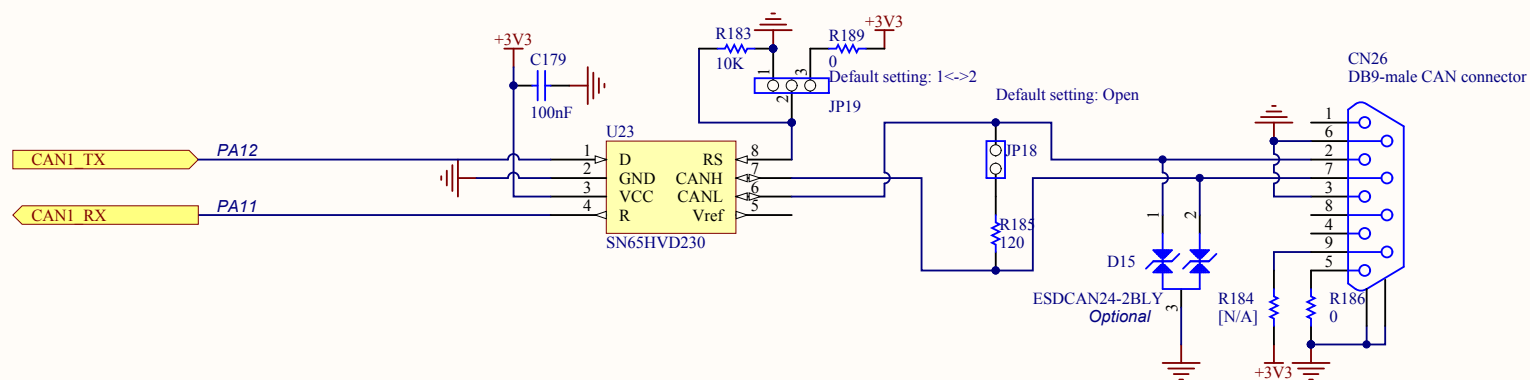


Title: LCD & Camera & Connector			 life.augmented
Project: STM32F769I-EVAL			
Size: A4	Reference: MB1219	Revision: B.1	
Date: 2016/2/3		Sheet: 6 of 17	

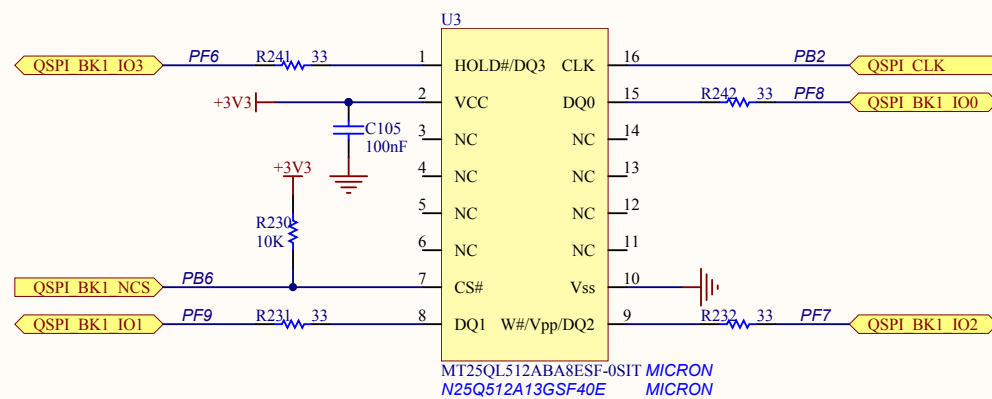





CAN

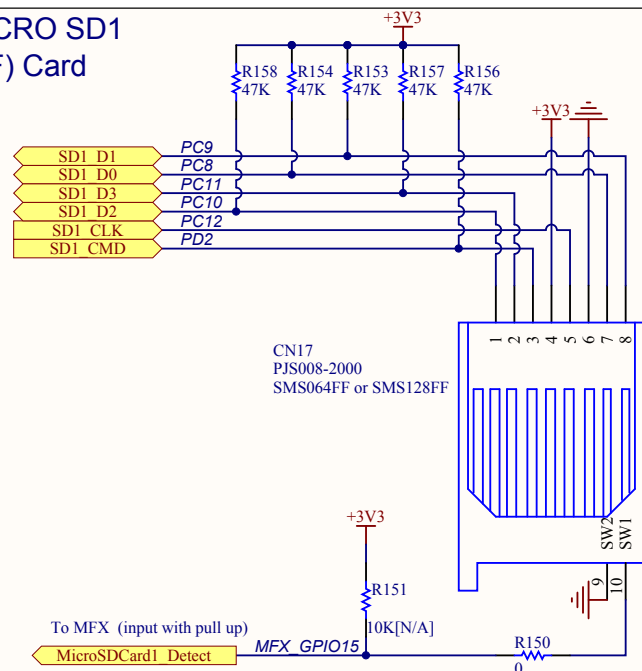


Quad SPI Flash

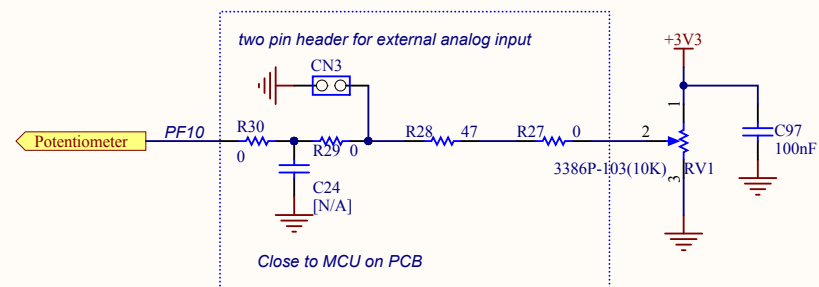


Title: CAN & QSPI			 life.augmented
Project: STM32F769I-EVAL			
Size: A4	Reference: MB1219	Revision: B.1	
Date: 2016/1/7		Sheet: 11 of 17	

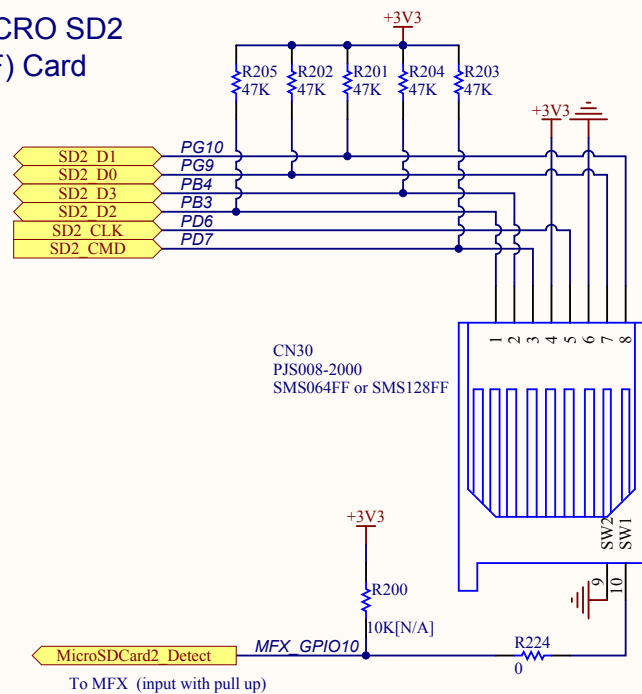
MICRO SD1
(TF) Card



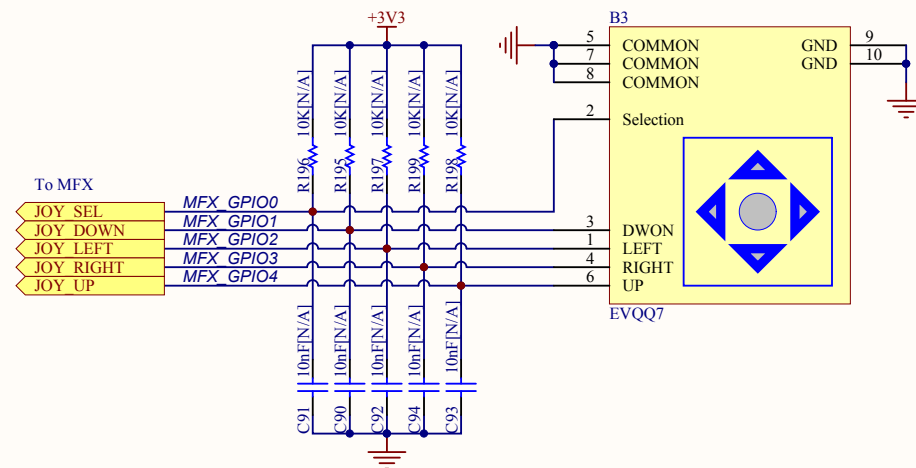
Potentiometer




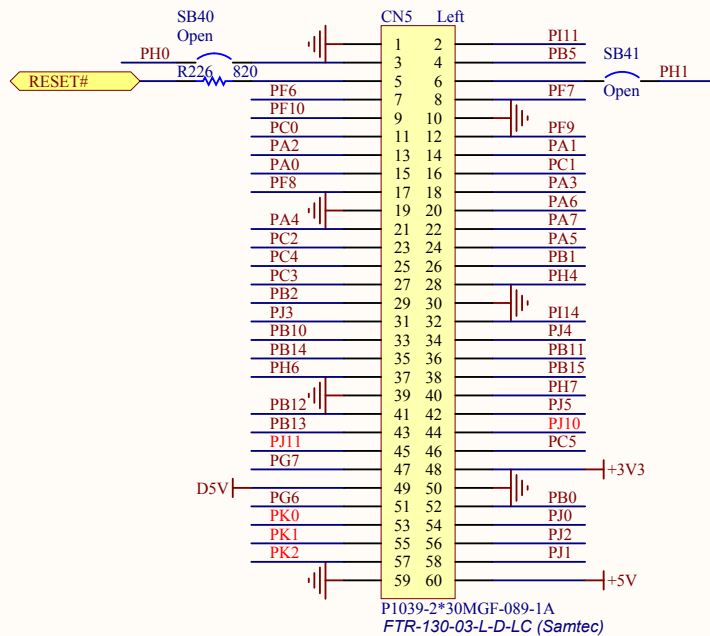
MICRO SD2
(TF) Card



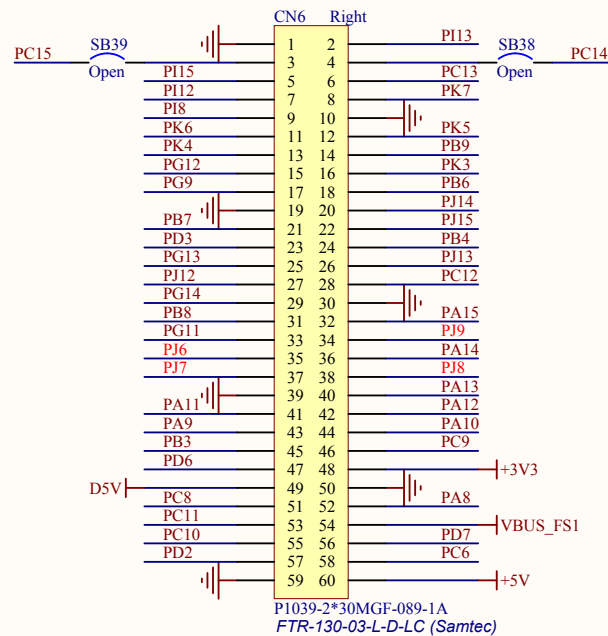
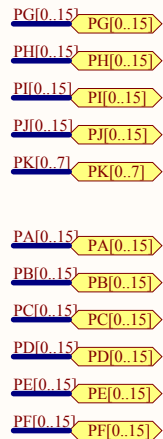
Joystick



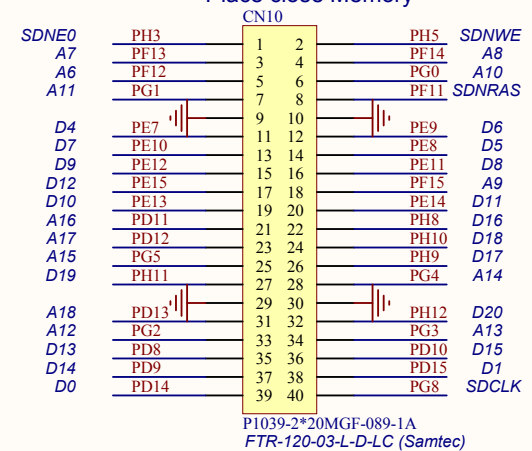
Title: Peripherals			 life.augmented
Project: STM32F769I-EVAL			
Size: A4	Reference: MB1219	Revision: B.1	
Date: 2016/1/7		Sheet: 12 of 17	



PK0/PK1/PK2/PJ6/PJ7/PJ8/PJ9/PJ10/PJ11 NOT USED



Place close Memory



Place close Memory

