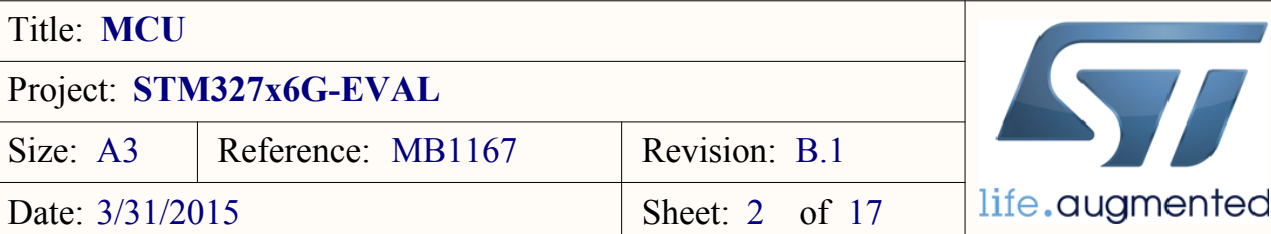
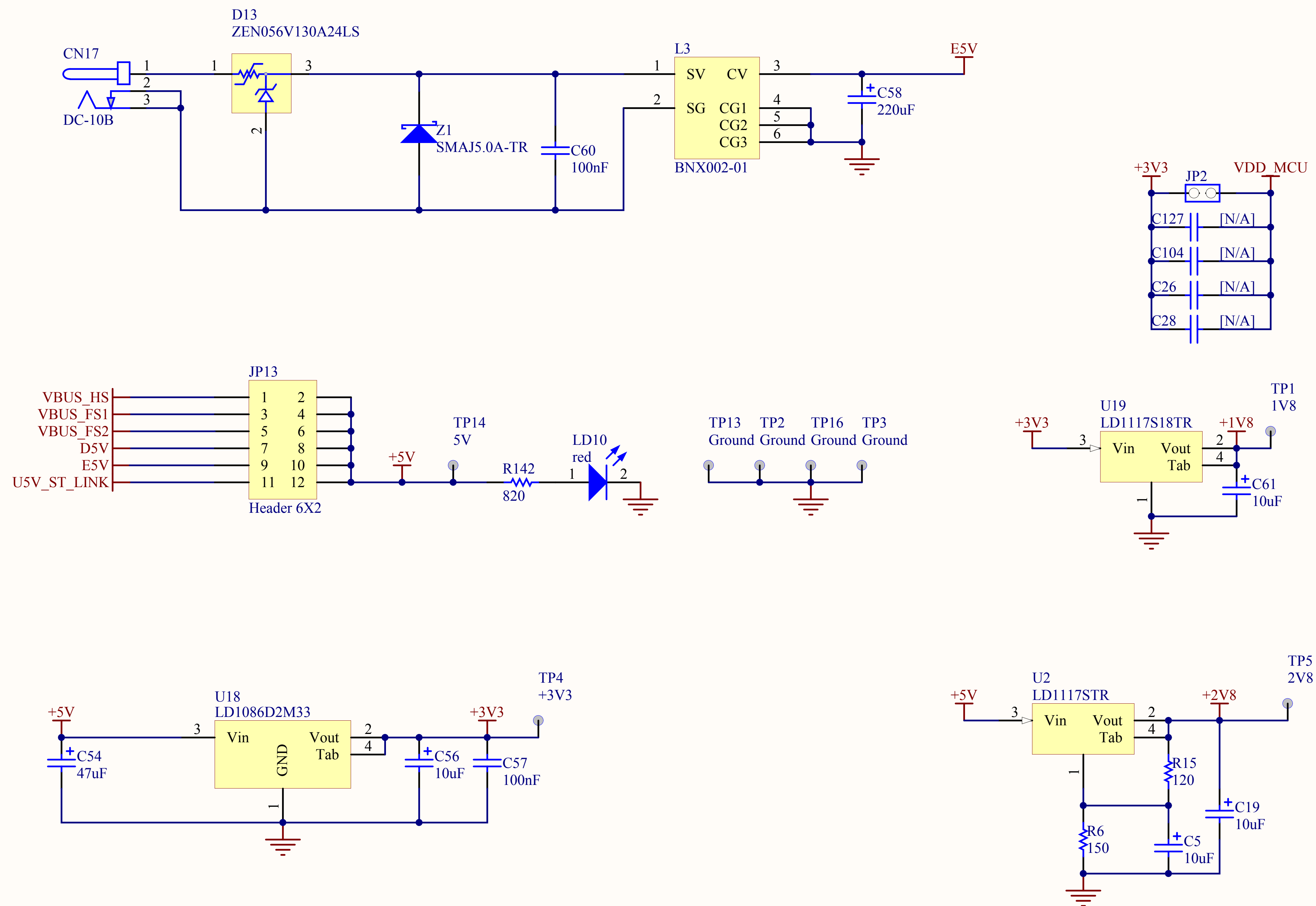


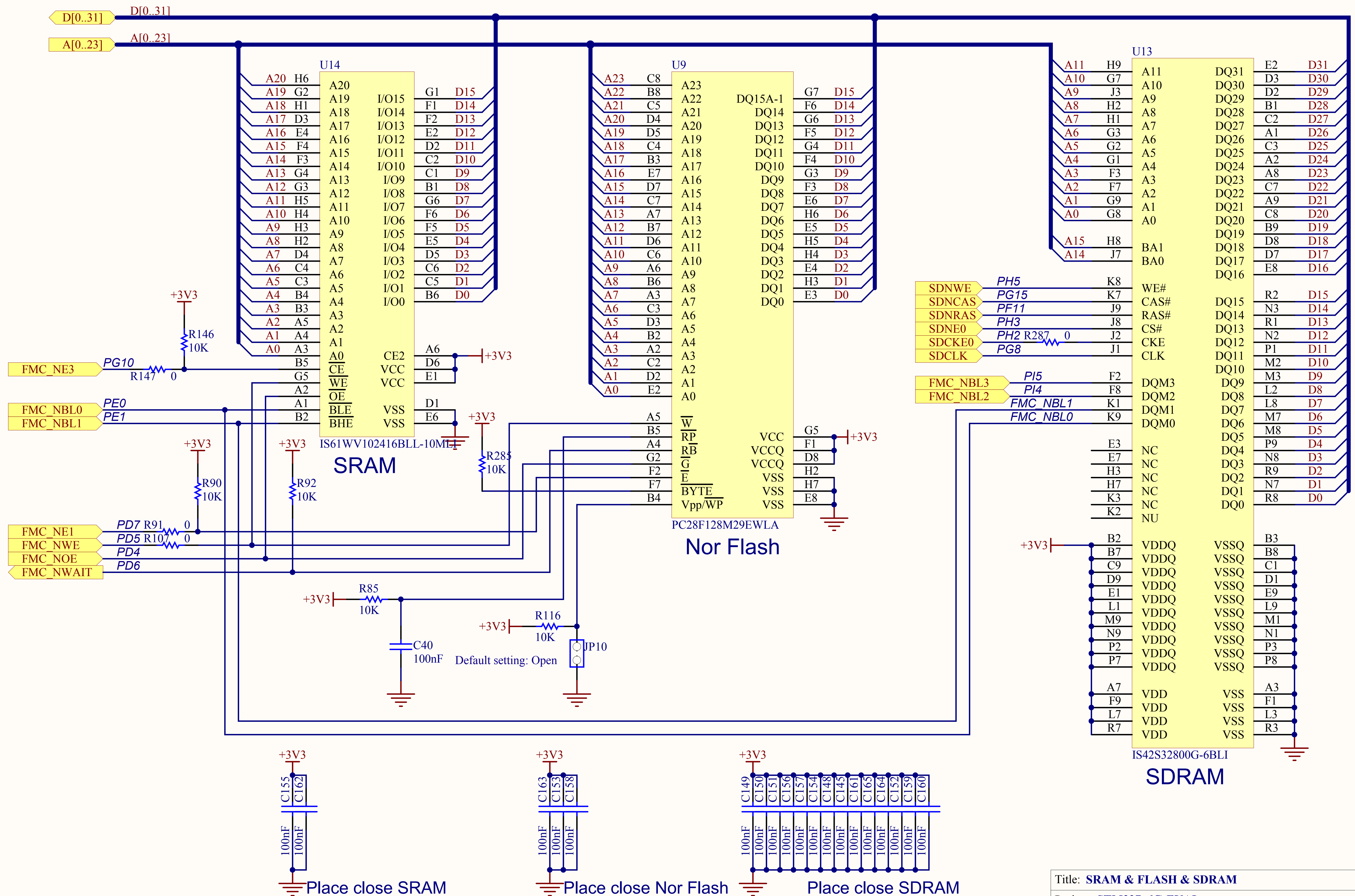
Note: 1.Text in *italic* placed on a wire doesn't correspond to net name. It just helps to identify rapidly MCU IO related to this wire.  
2.T4 & T5 changed to BSN20, R183 changed to BAT60, C21 & C22's value changed to 1.5pF, 32K crystal's part number changed to NX3215SA-32.768KHZ-EXS00A-MU00525 from A.1 to B.1  
3.CN28 changed to DLR11H0 from A.1 to B.1  
4.JP21 & JP22 are added to select MII\_MDIO&MII\_MDC and SAI on PA2/PC1 from A.1 to B.1  
5. JP23 & JP24 are added to select LD1 & LD2 from A.1 to B.1  
6. R188 10Kohm replaced by 4.7Kohm from A.1 to B.1







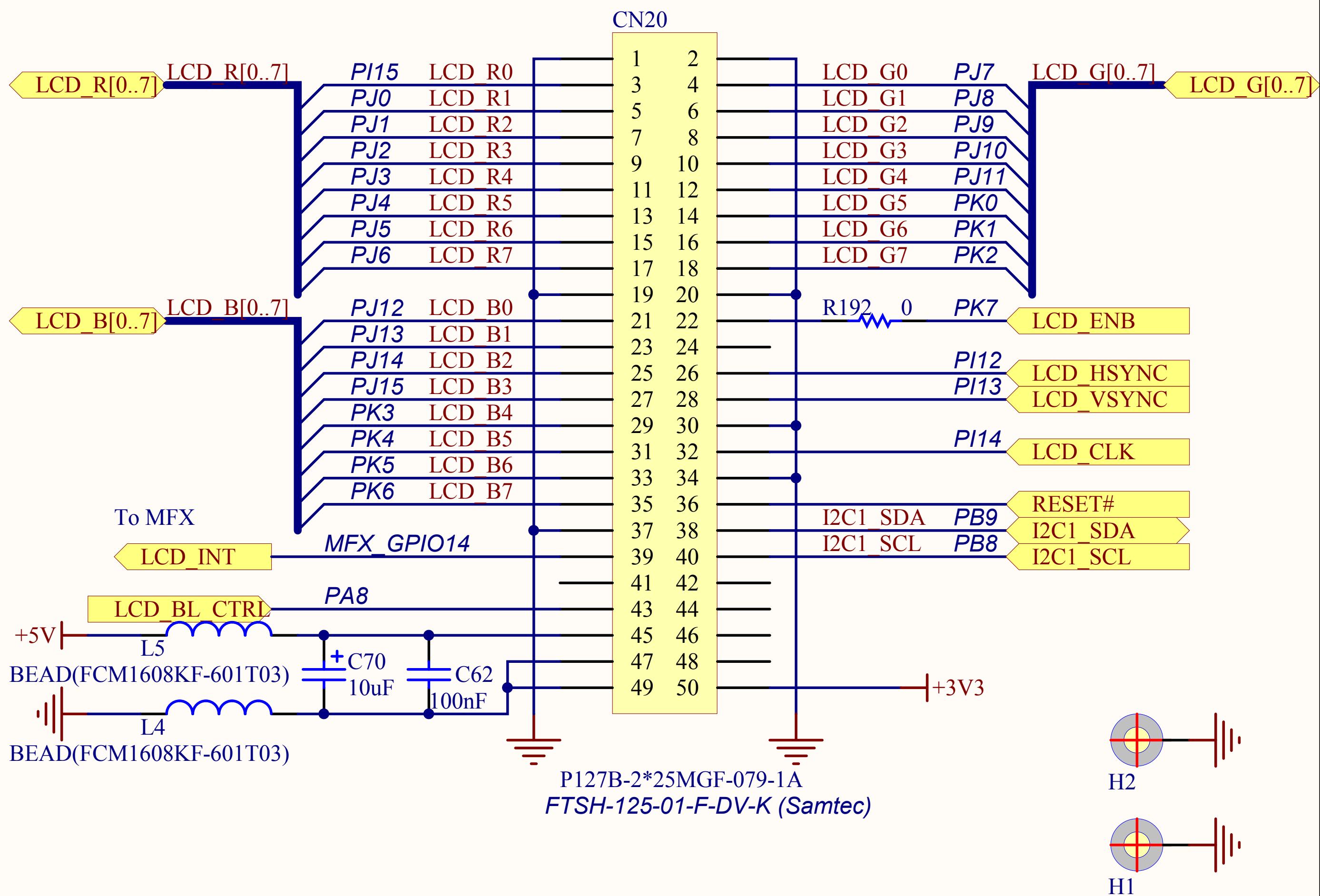




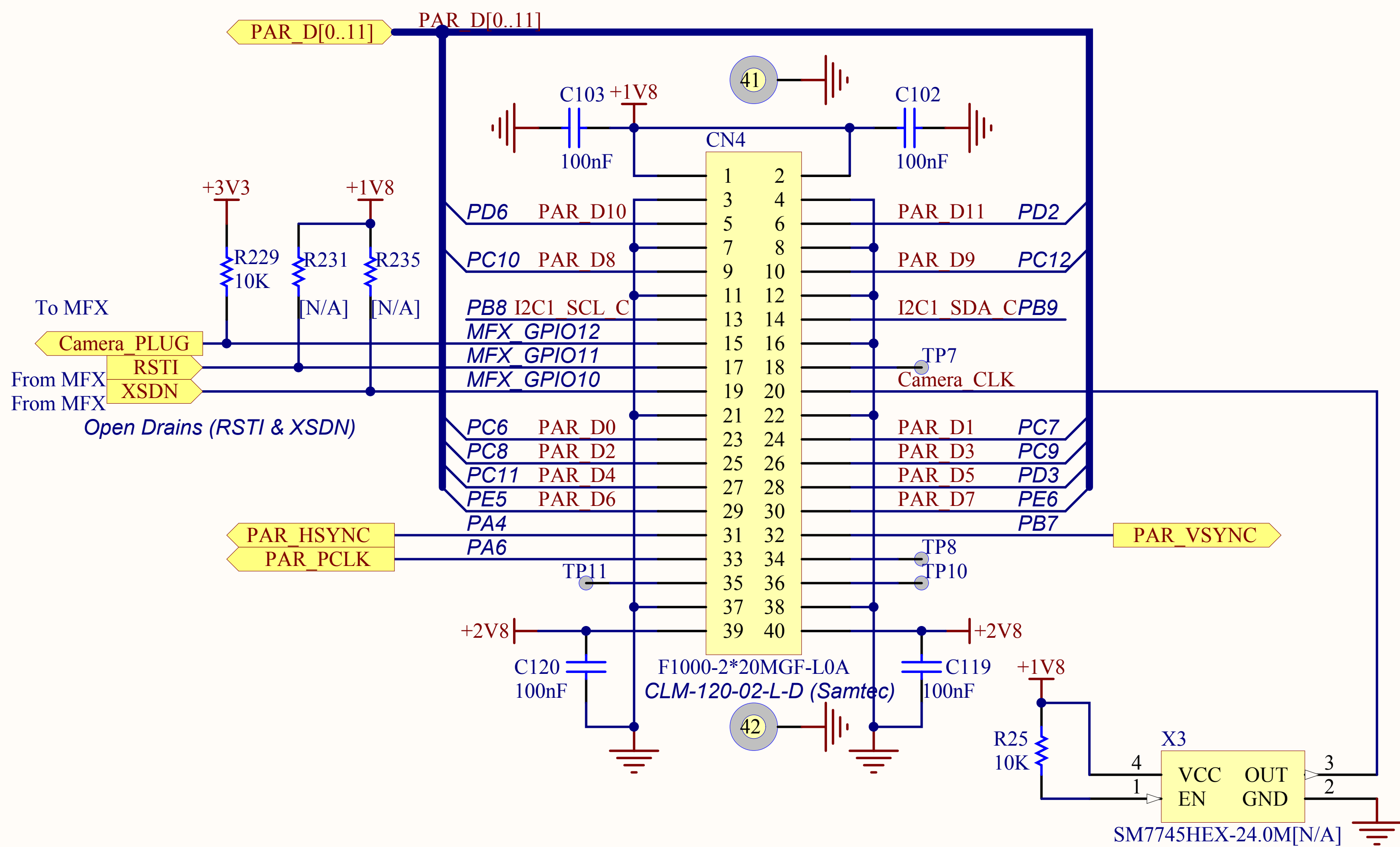




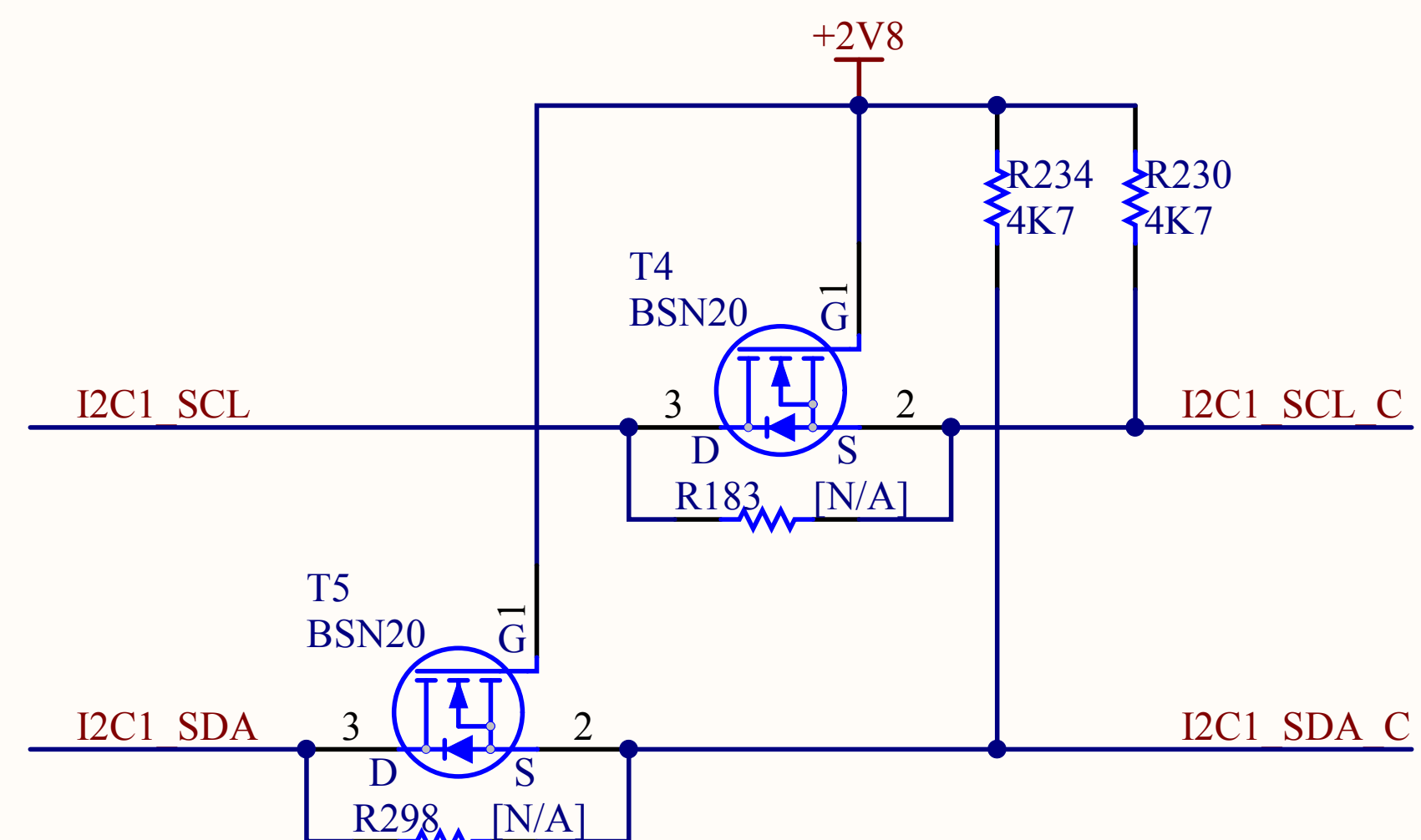
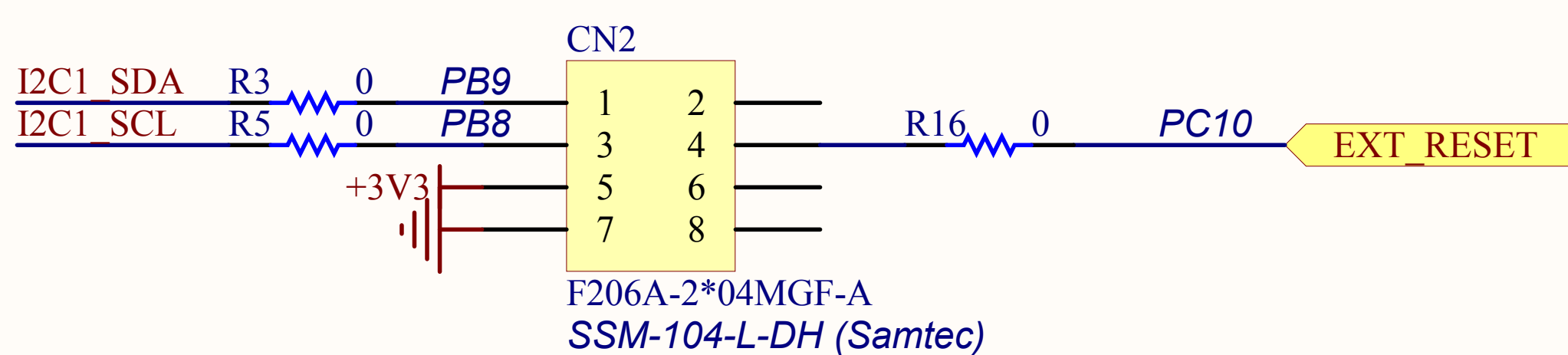
## RGB LCD




# Camera

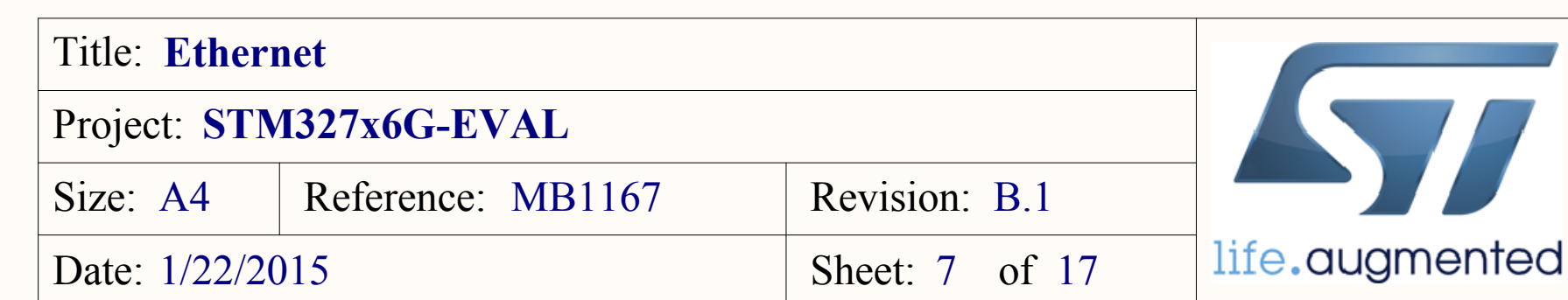


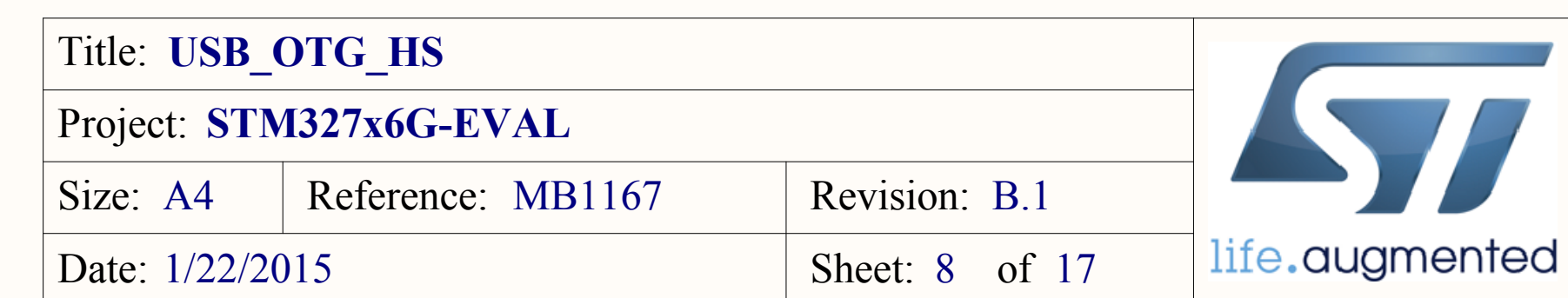
## EXT/RF E2P Connector



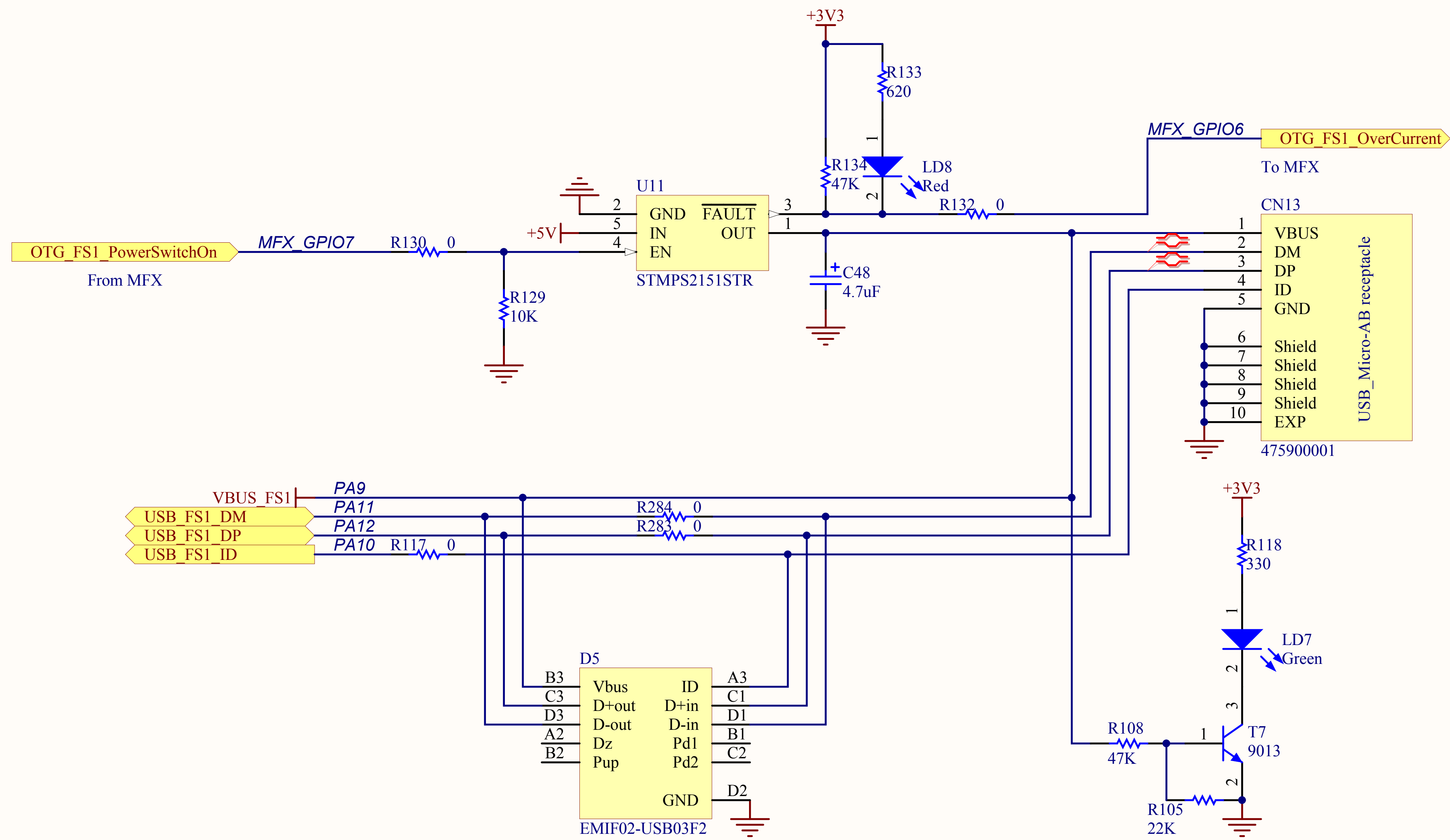
Title: <b>LCD &amp; Camera &amp; Connector</b>			 life.augmented
Project: <b>STM327x6G-EVAL</b>			
Size: <b>A4</b>	Reference: <b>MB1167</b>	Revision: <b>B.1</b>	
Date: <b>1/22/2015</b>		Sheet: <b>6</b> of <b>17</b>	

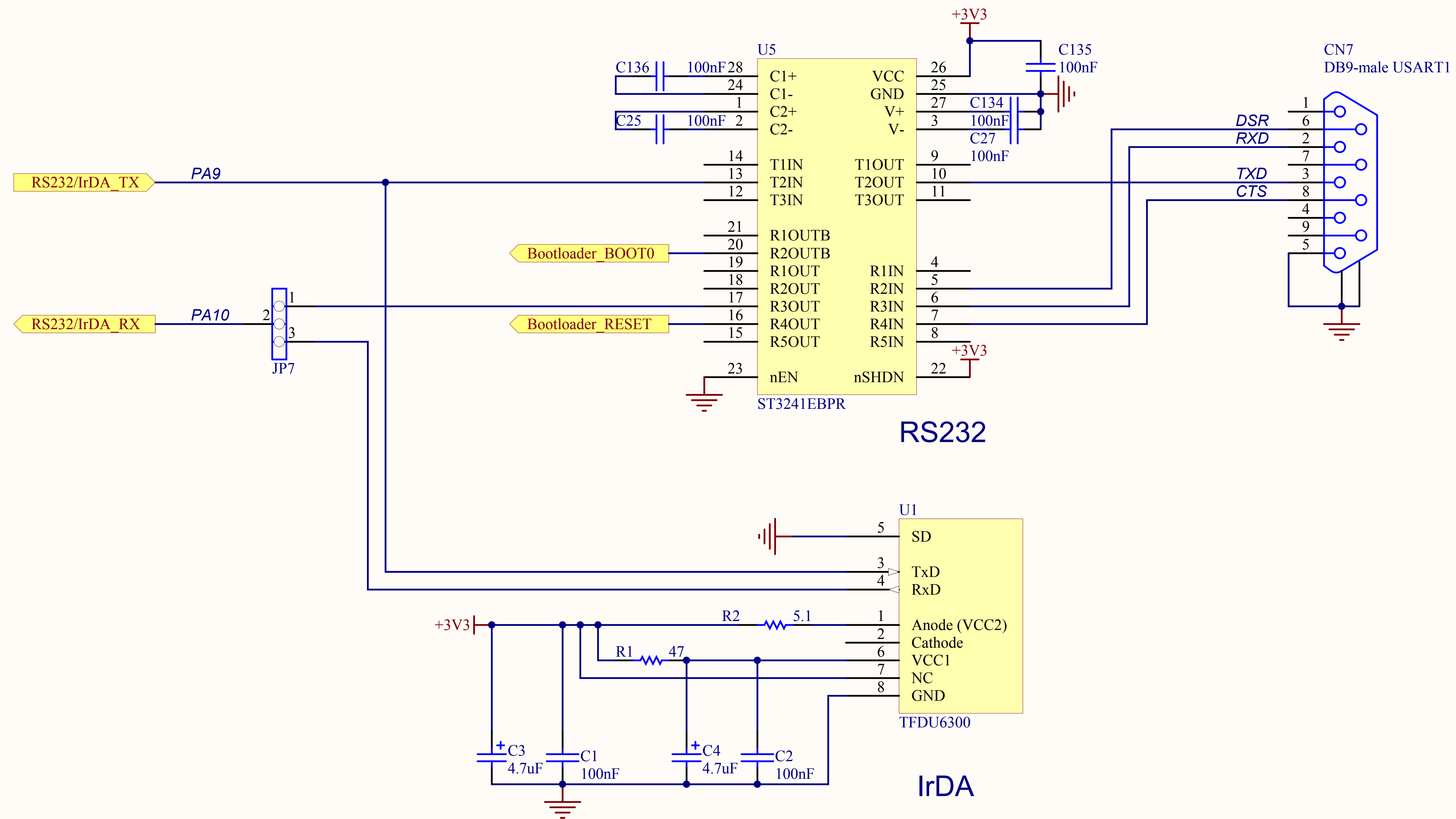






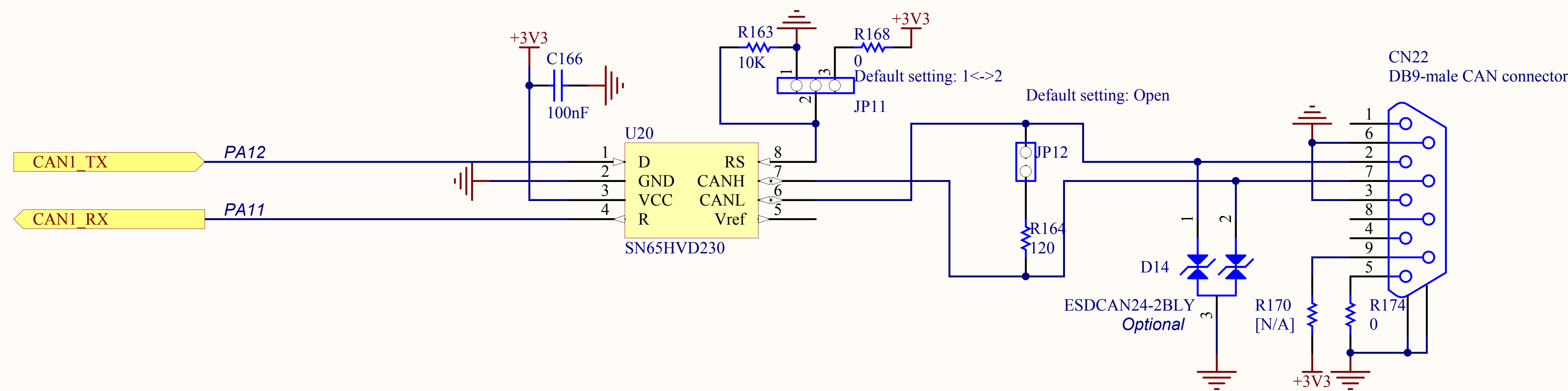




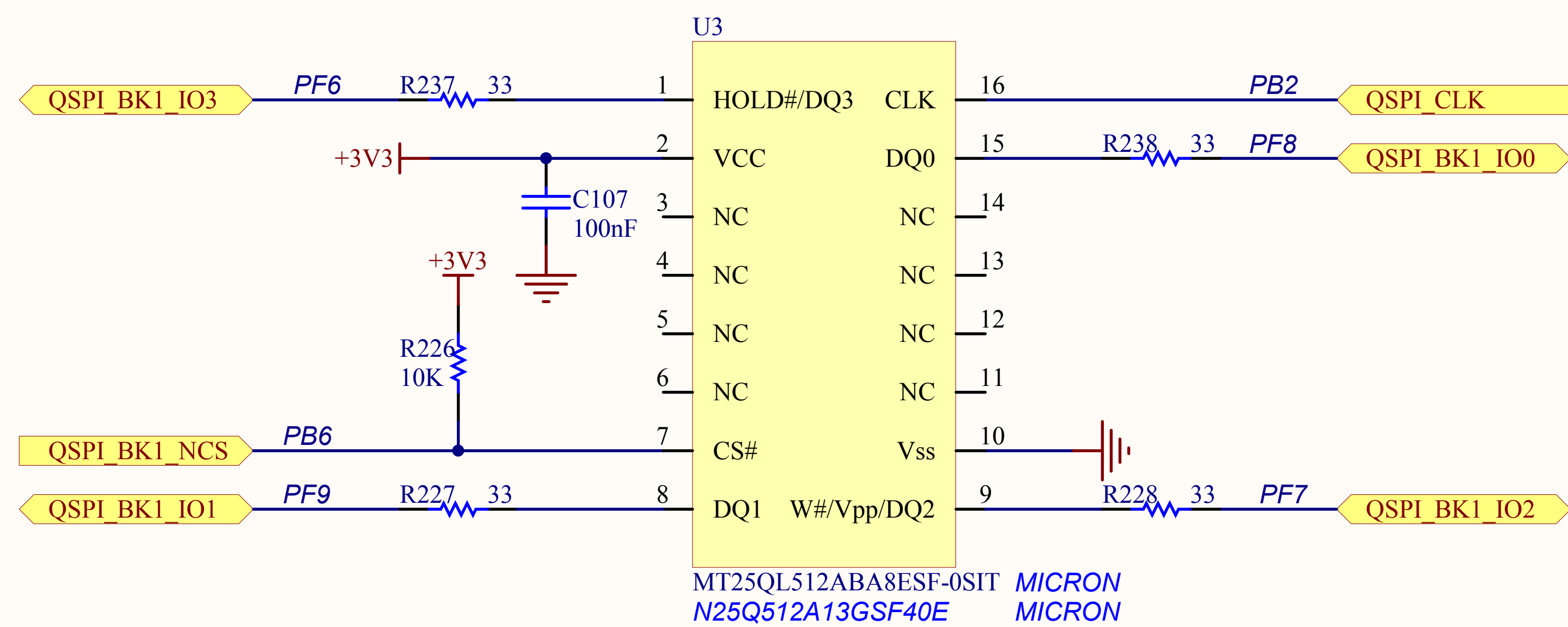




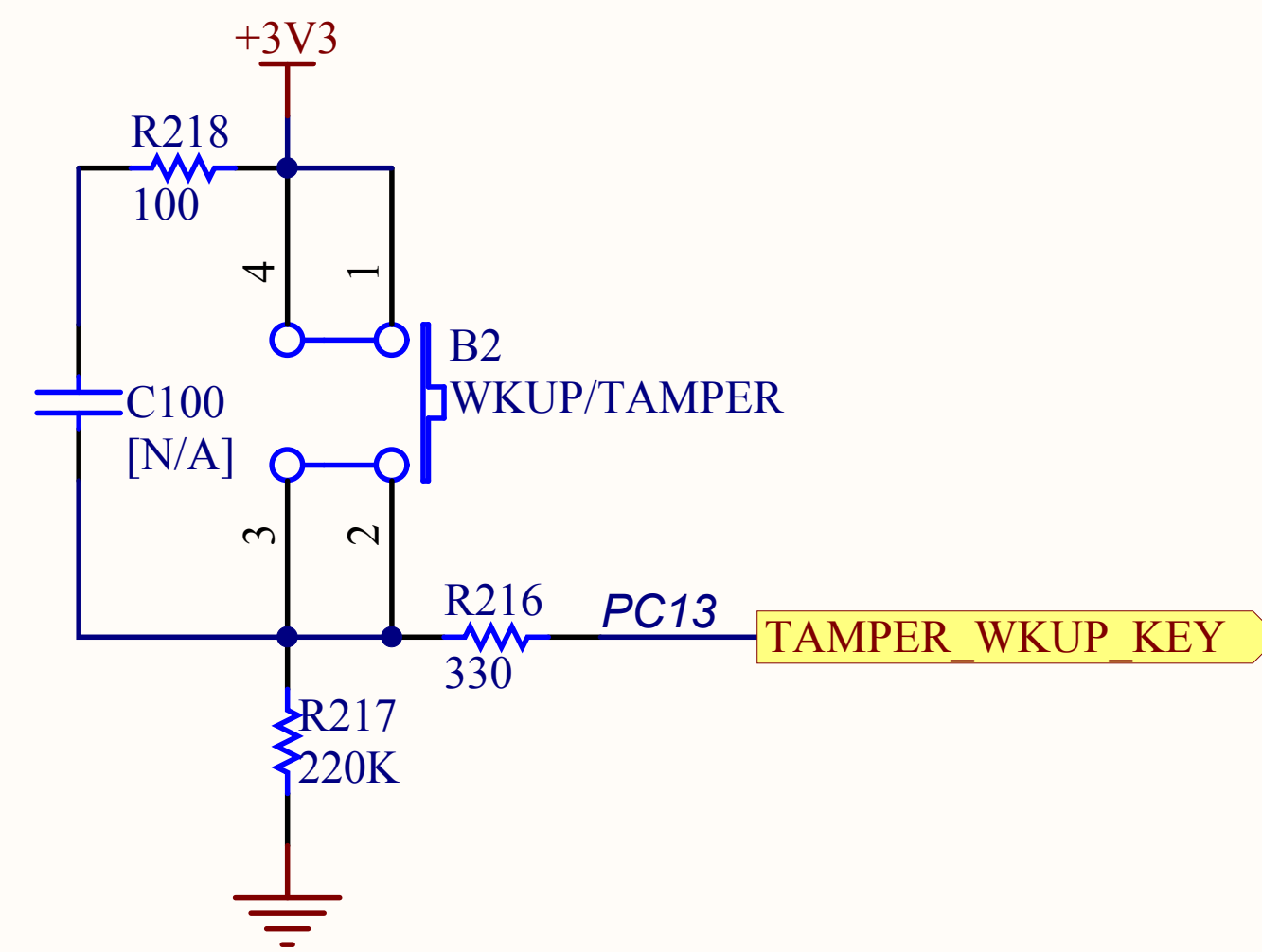
CAN



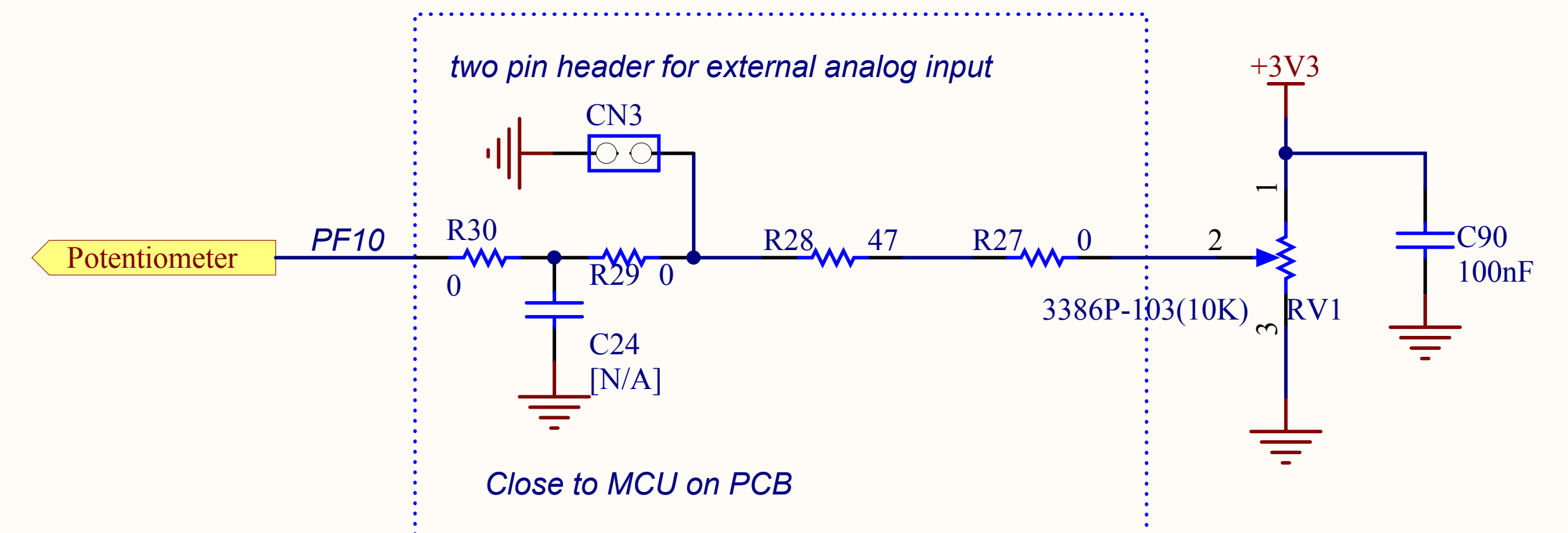
Quad SPI Flash



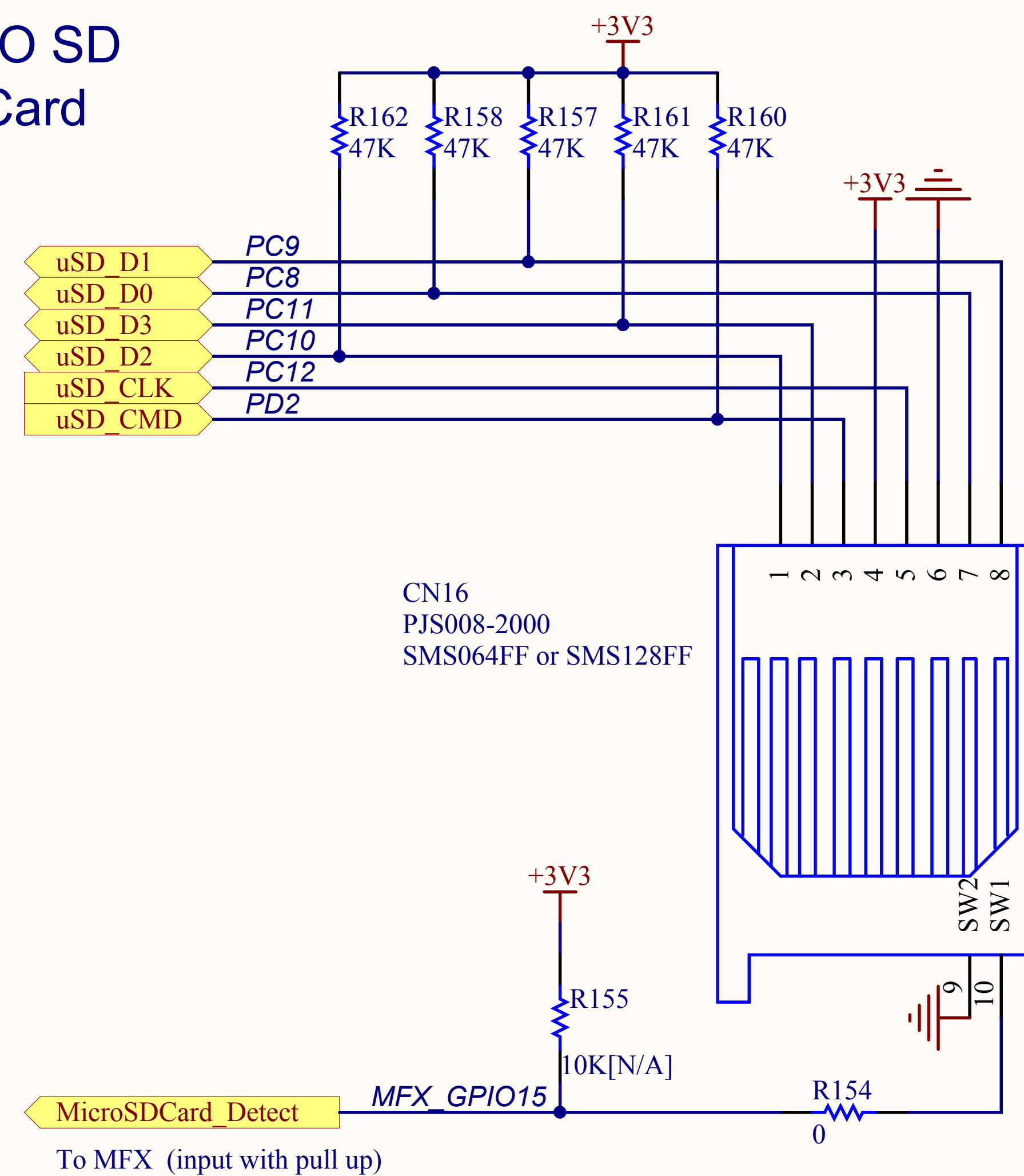
## Wakeup Button



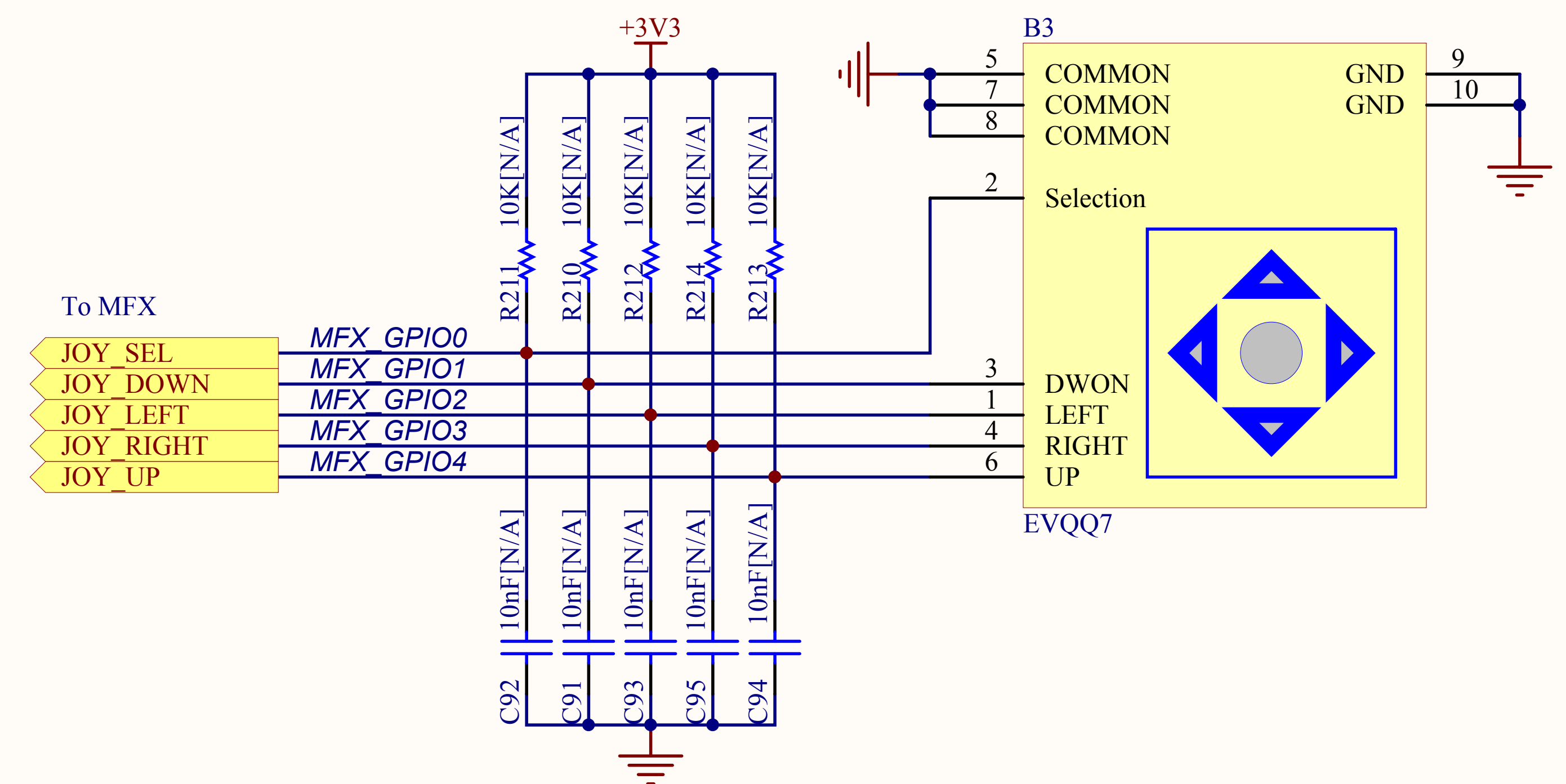
## Potentiometer




## MICRO SD (TF) Card



## Joystick



Title: <b>Peripherals</b>			 life.augmented
Project: <b>STM327x6G-EVAL</b>			
Size: <b>A4</b>	Reference: <b>MB1167</b>	Revision: <b>B.1</b>	
Date: <b>1/22/2015</b>		Sheet: <b>12</b> of <b>17</b>	



Motor control connector

