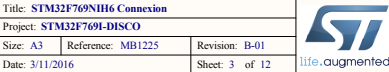
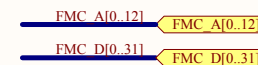
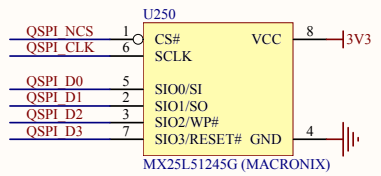
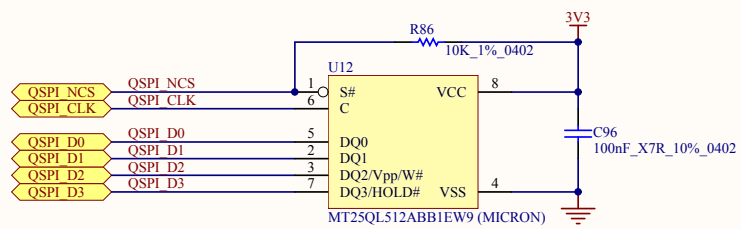


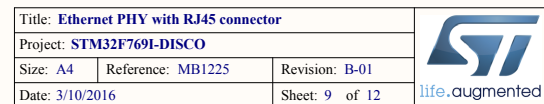
Rev B-01 --> MB1225 B-01, VDD_VREGDSI of U13 is connected to VDD instead of DSI_VDDI2, EXT_I2C for CN2 is built by GPIOs.
Add DFSDM_CKOUT/DATIN1/DATIN5, Remove L1
Rev A-01 --> MB1225 A-01





Quad SPI Flash Memory





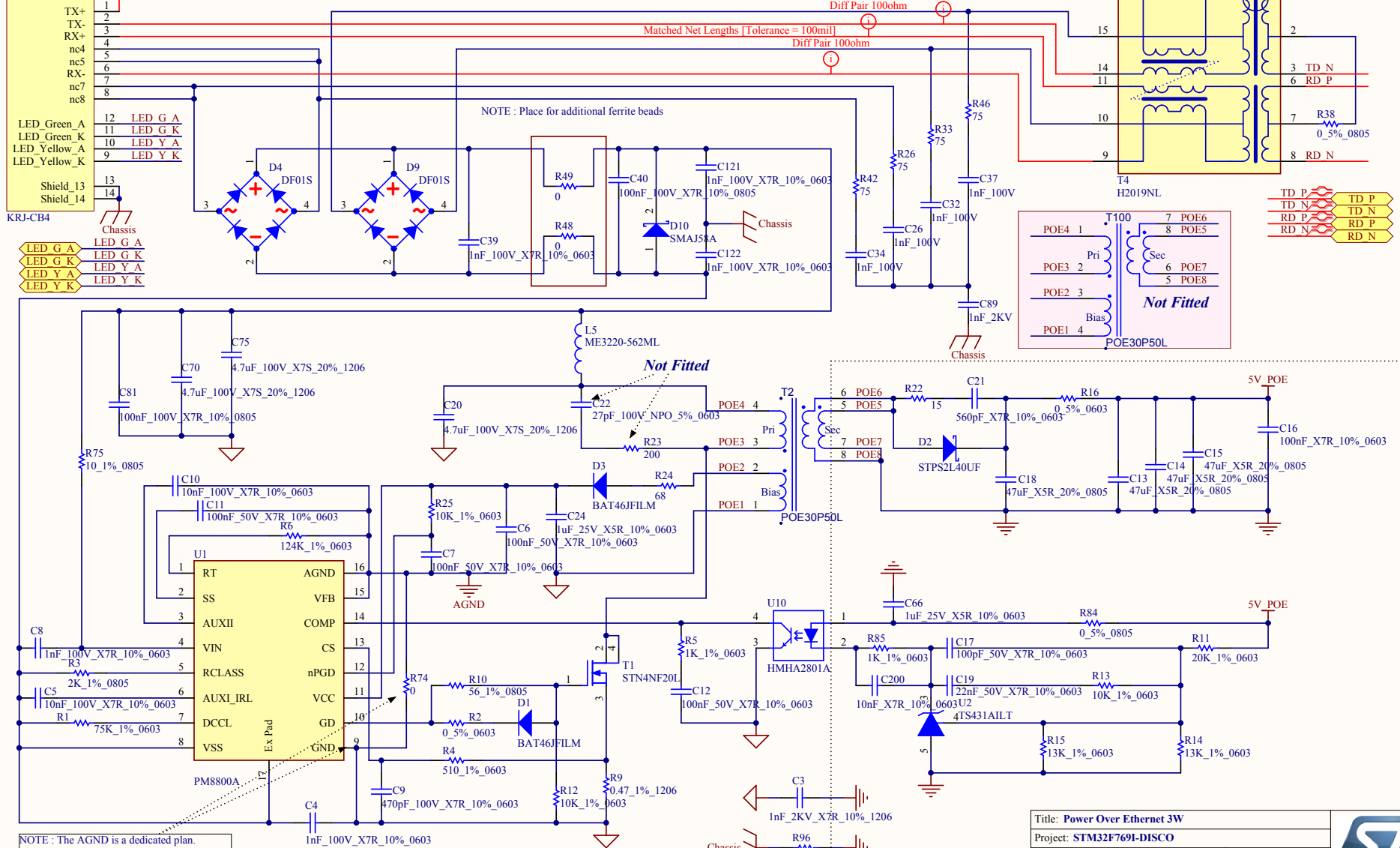
INPUT

Power Over Ethernet

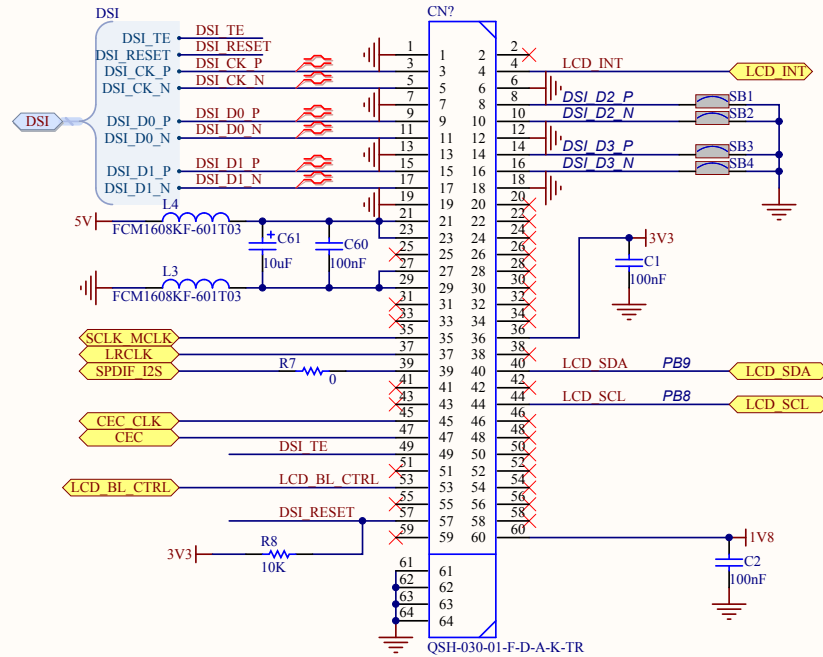
Matched Net Lengths [Tolerance = 100mil]
Diff Pair 100ohmMatched Net Lengths [Tolerance = 100mil]
Diff Pair 100ohmMatched Net Lengths [Tolerance = 100mil]
Diff Pair 100ohm

Diff Pair 100ohm

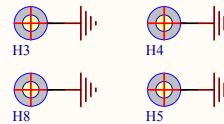
CN10

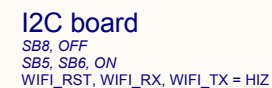
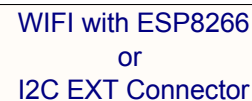


DSI LCD



MB1166 I2C Address : 0101 0100



[illegible]

life.augmented